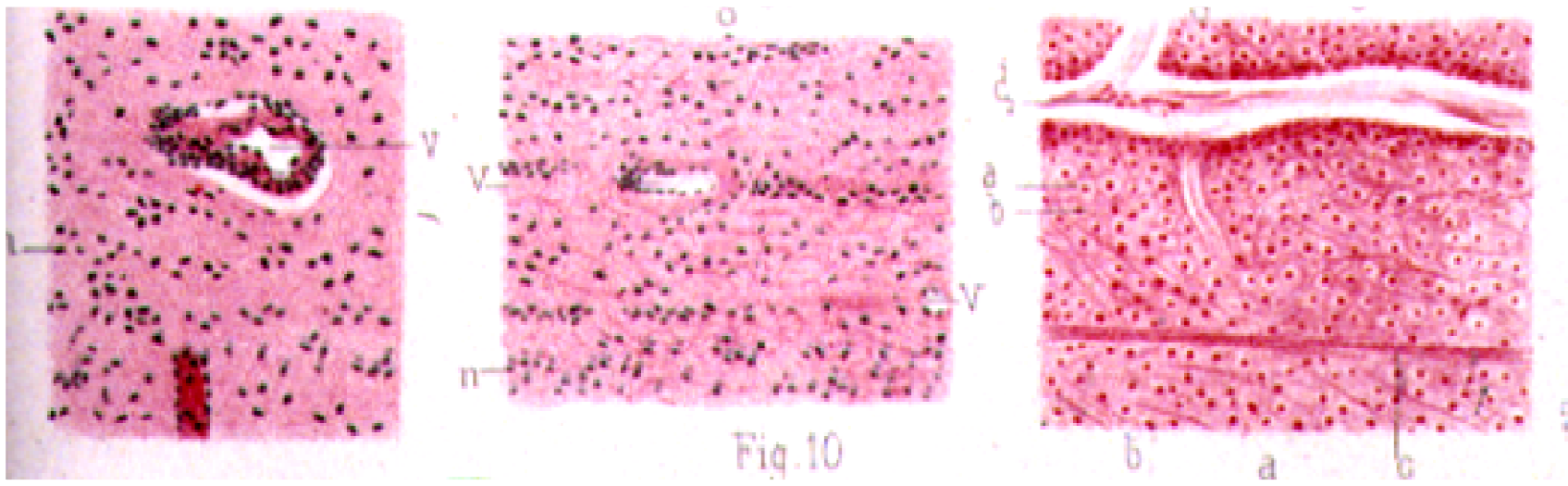
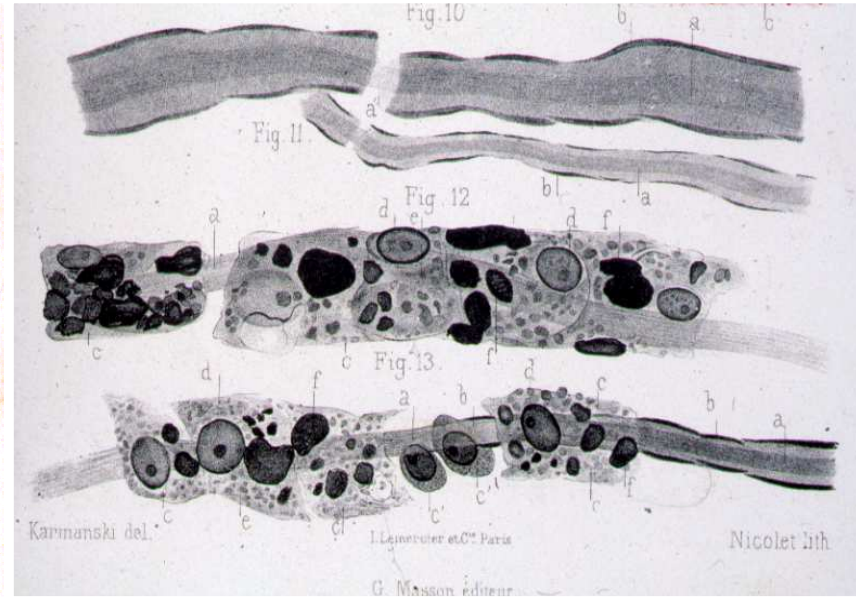
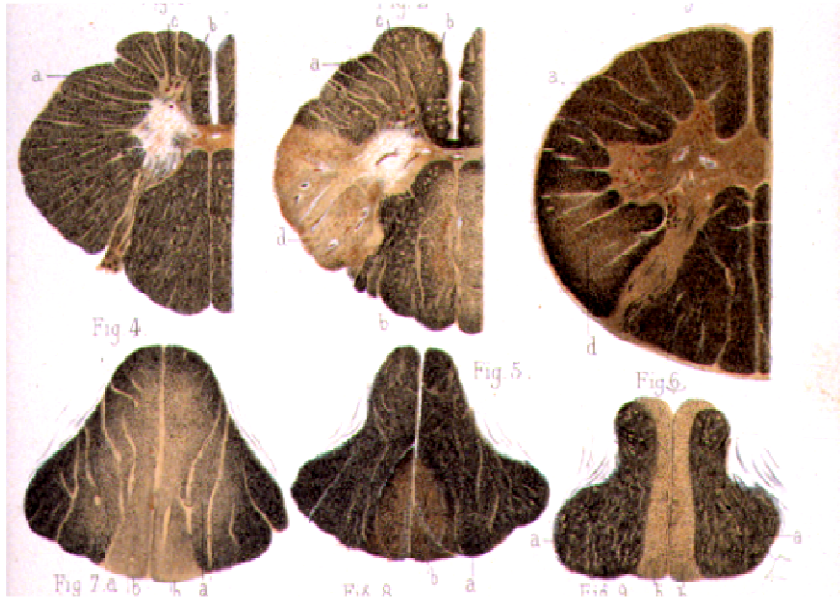


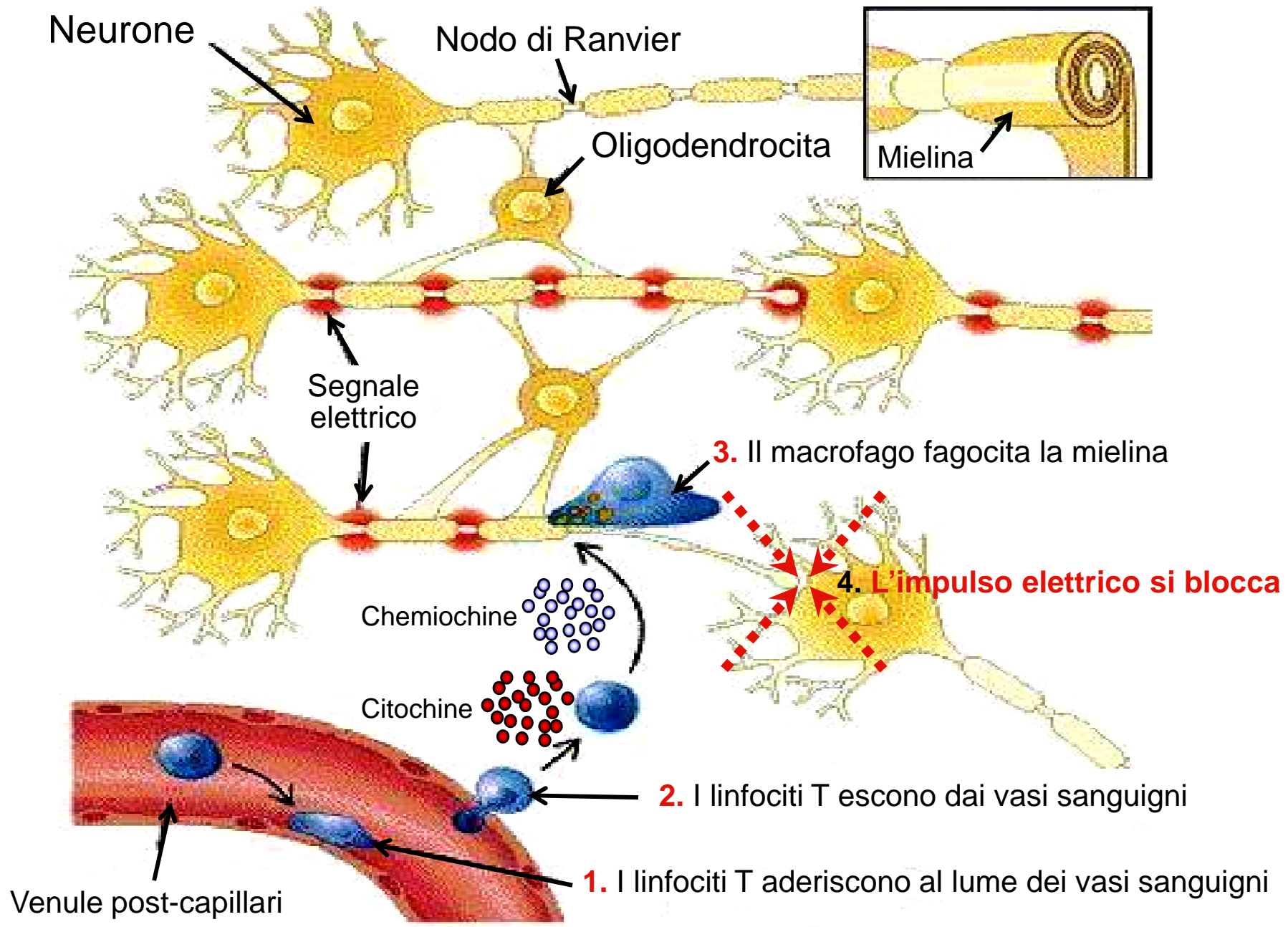


Come funzionano i farmaci ed i meccanismi degli effetti collaterali

**Dr. Roberto Furlan
Istituto Scientifico San Raffaele**

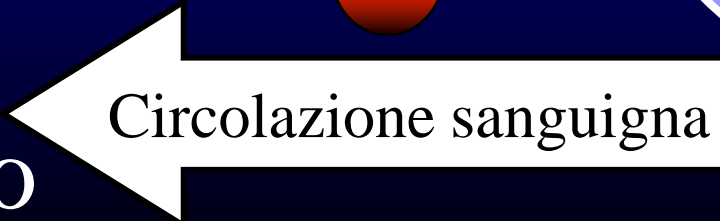
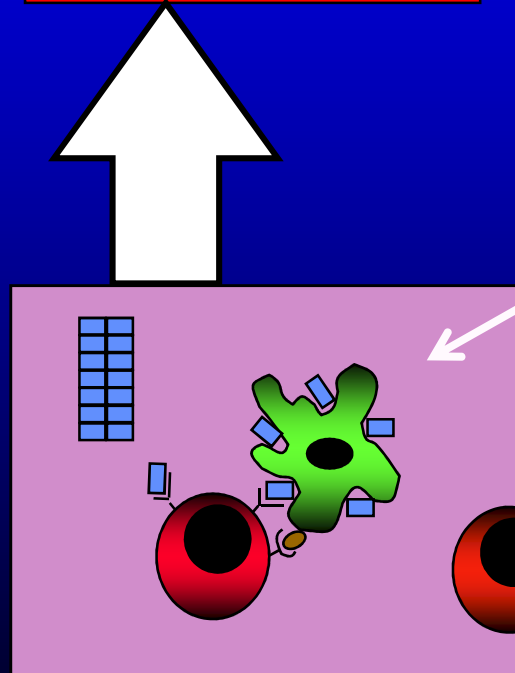
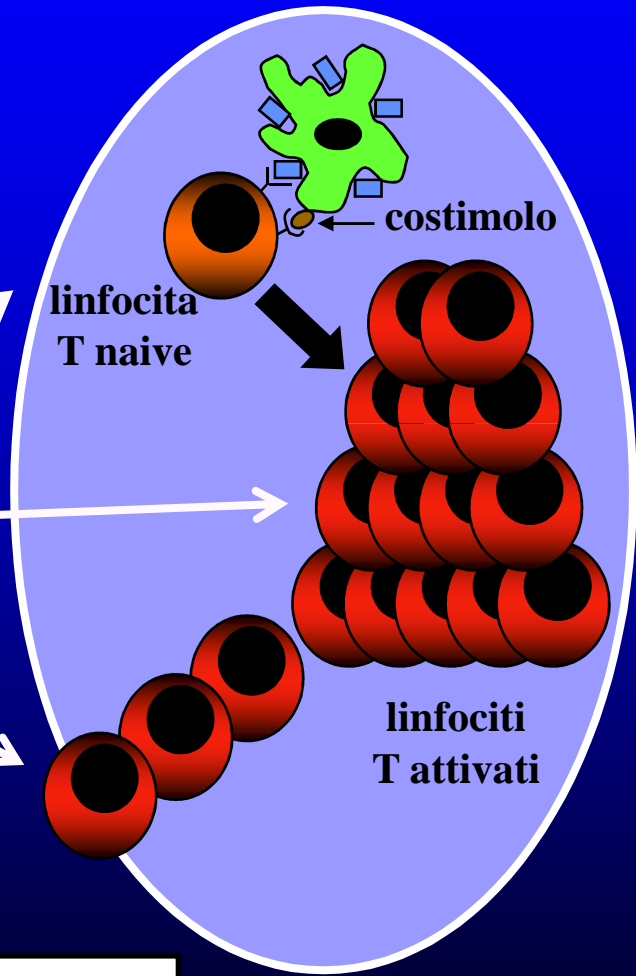
Monza, 9 aprile 2014





sito di induzione

linfonodo
loco-regionale



organo bersaglio

Approcci terapeutici plausibili in sclerosi multipla

Intervenire sull'inflammatione che
causa il danno

- terapie immunomodulanti
- terapie immunosoppressive

Promuovere la riparazione delle
lesioni già esistenti

Intervenire sull' infiammazione che causa il danno

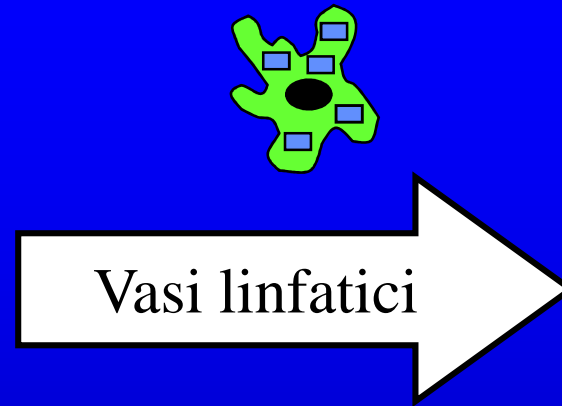
-terapie immunomodulanti

- Interferone beta
- Copaxone o glatiramer acetate
- FTY720 o Fingolimod o Gylenia
- Dimetilfumarato o BG-12 o Tecfidera
- Teriflunomide o Aubagio
- Laquinimod
- Tysabri o antegren o natalizumab
- Rituximab
- Ocrelizumab

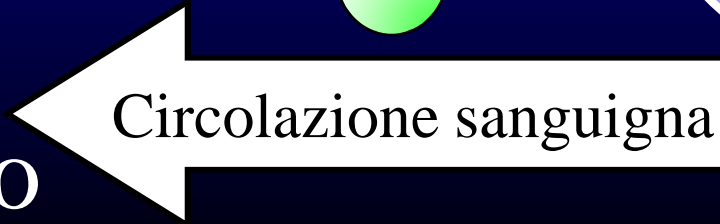
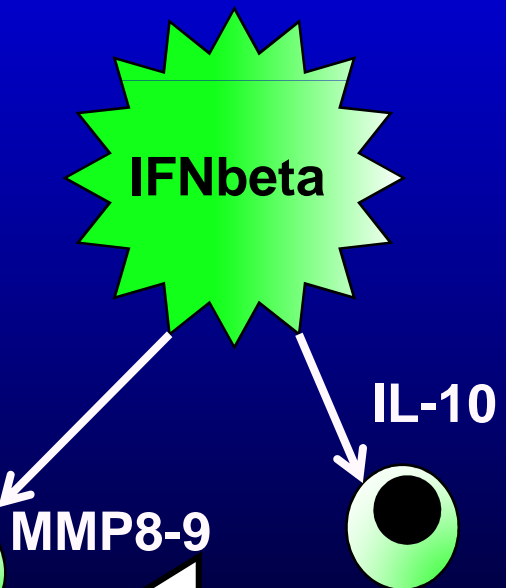
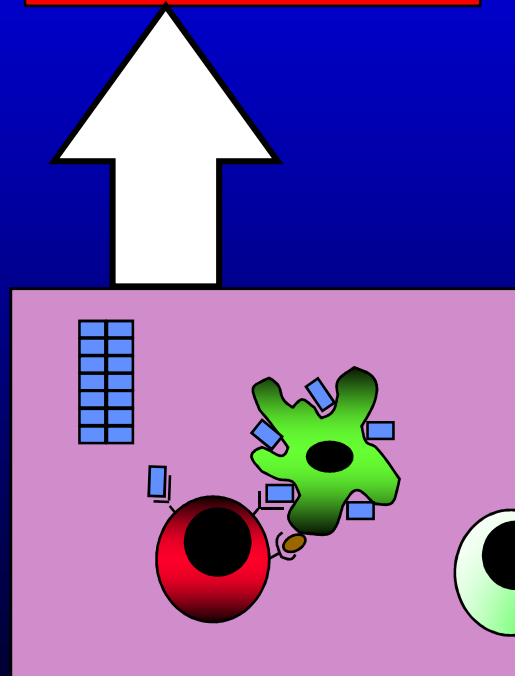
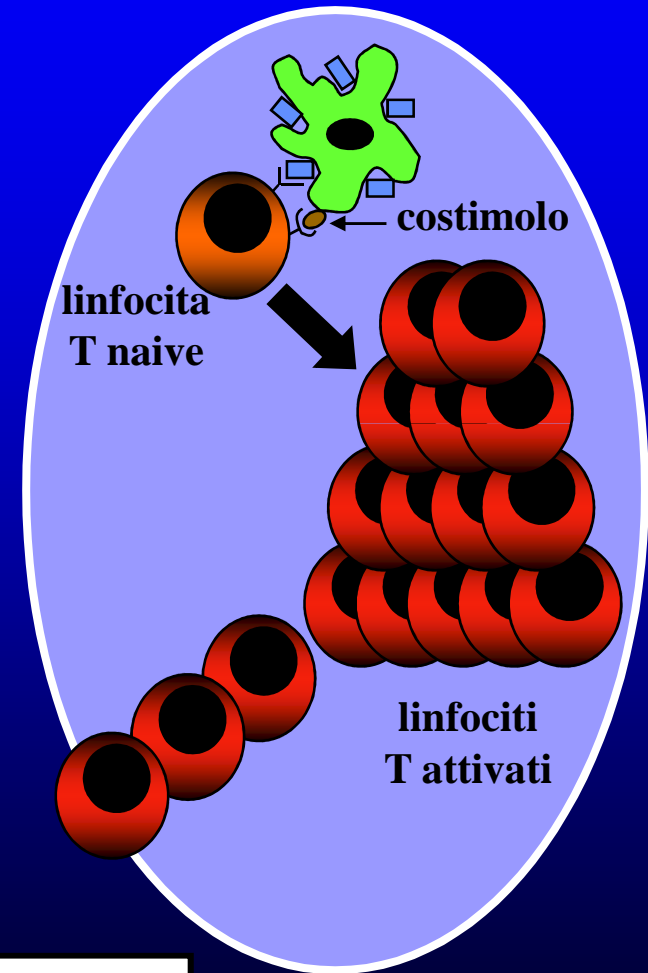
-terapie immunosoppressive

- Mitoxantrone o novantrone
- ciclofosfamide
- Azatioprina
- Cladribina
- Campath
- Trapianto di midollo osseo

sito di induzione

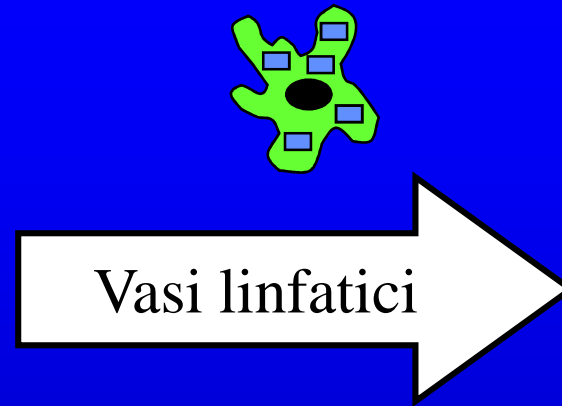


linfonodo
loco-regionale

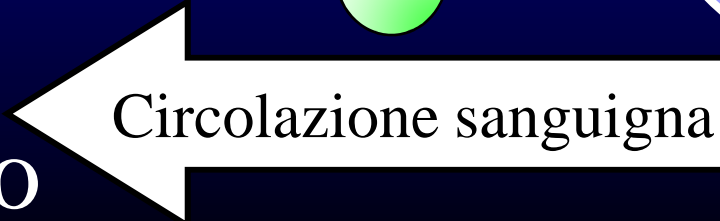
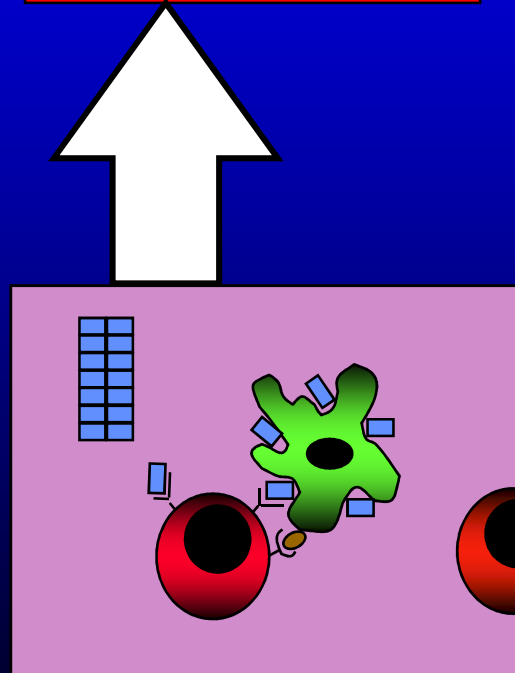
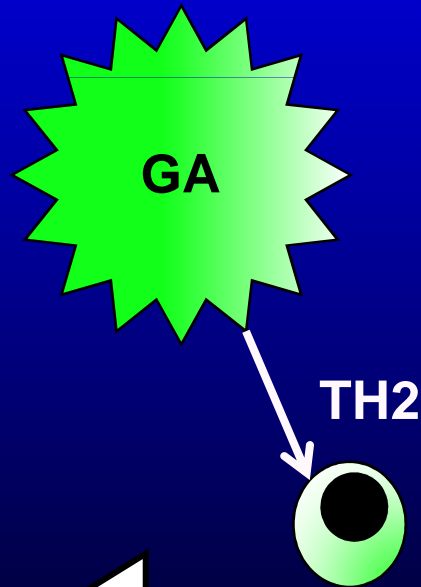
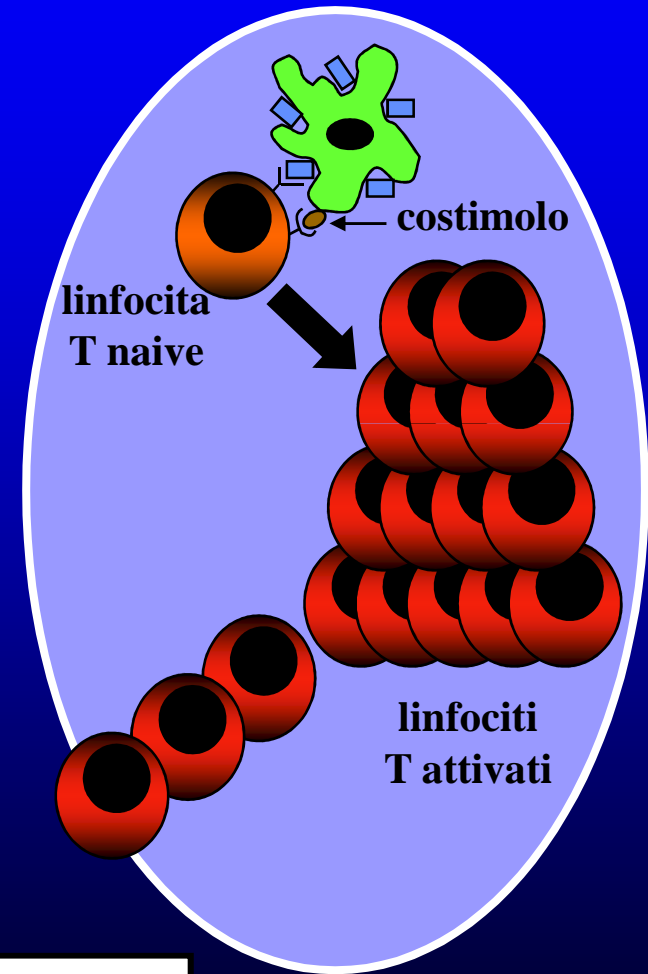


organo bersaglio

sito di induzione



linfonodo loco-regionale

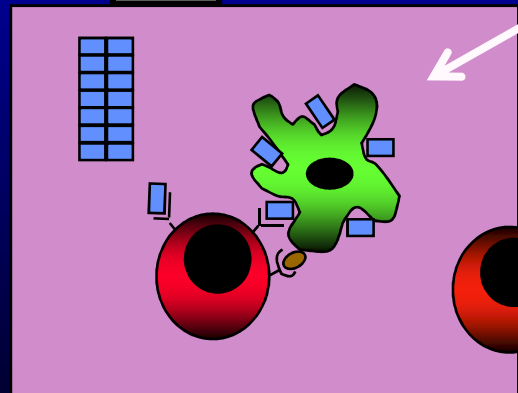
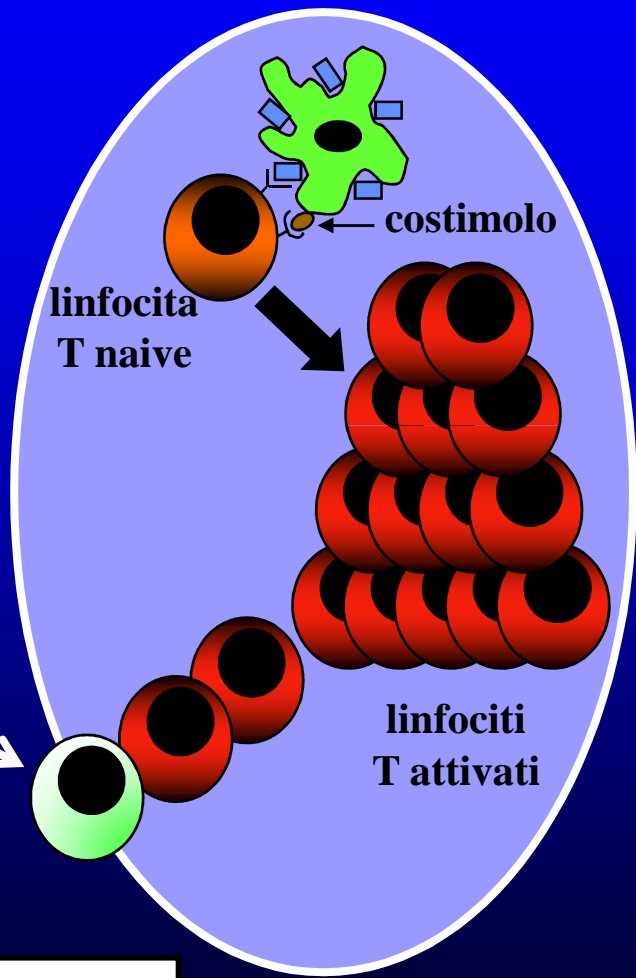


organo bersaglio

sito di induzione

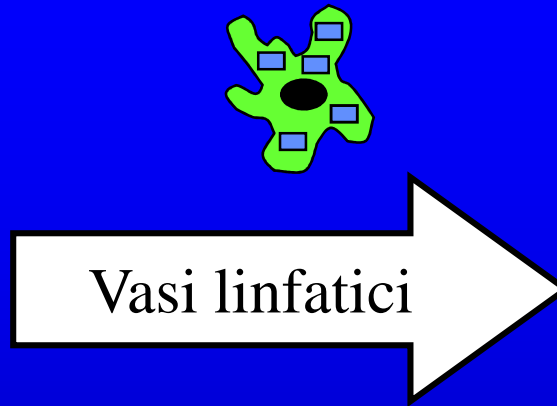


linfonodo
loco-regionale

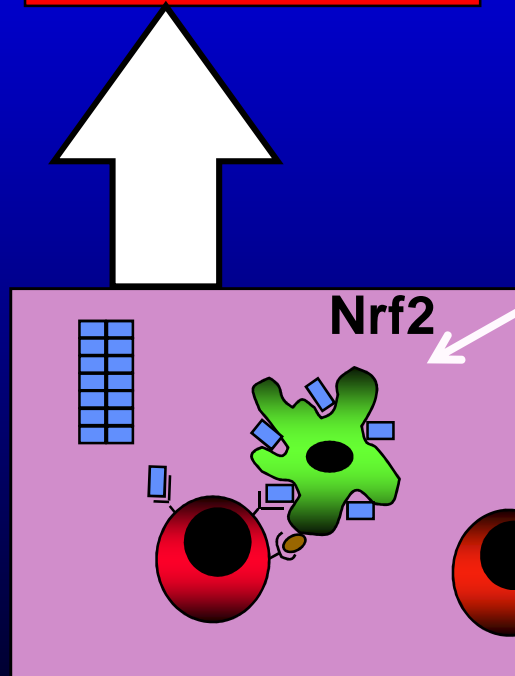
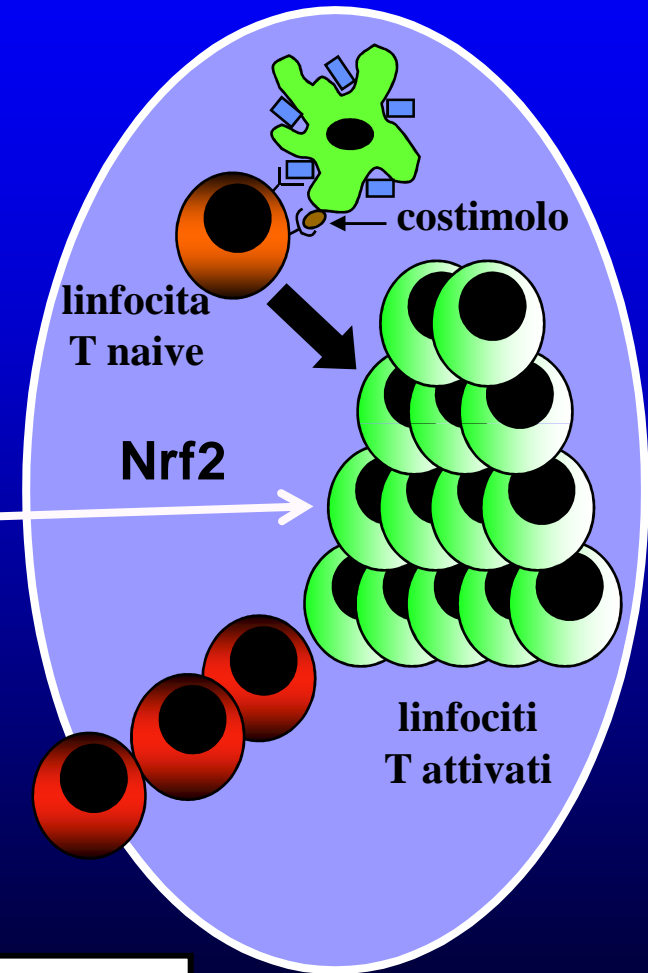


organo bersaglio

sito di induzione



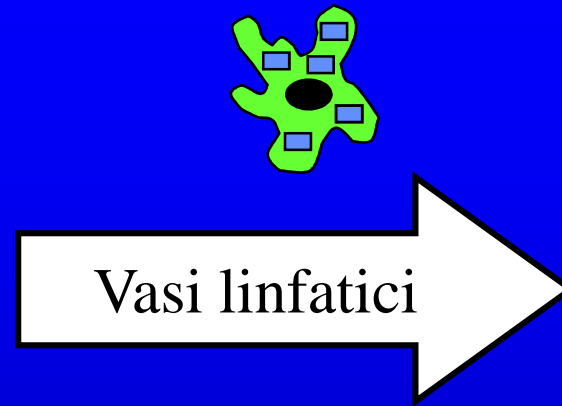
linfonodo loco-regionale



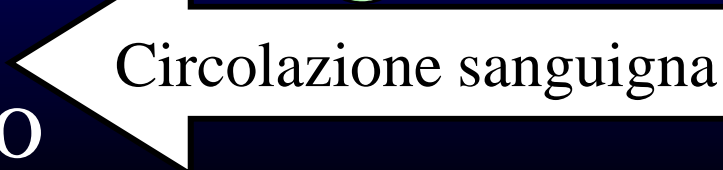
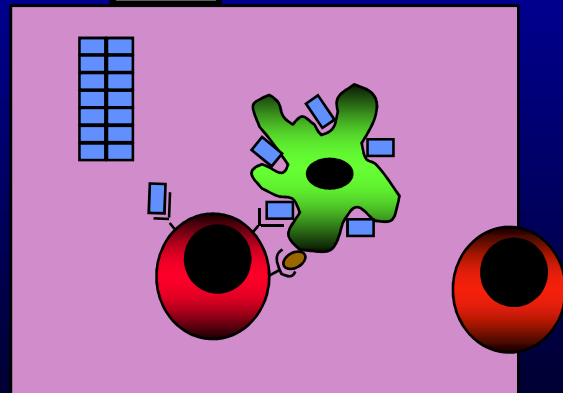
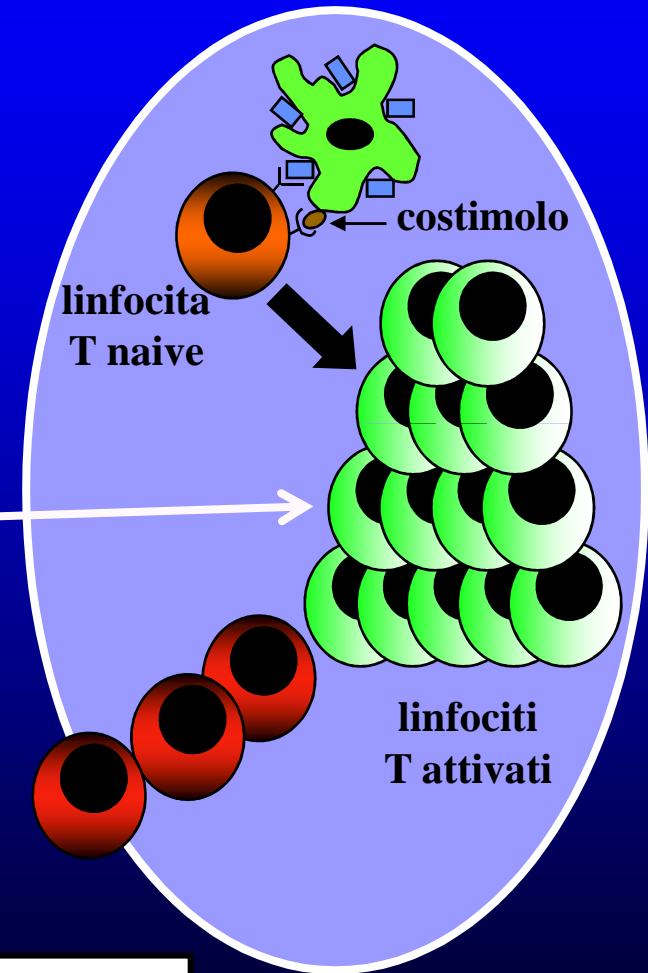
organo bersaglio



sito di induzione



linfonodo
loco-regionale

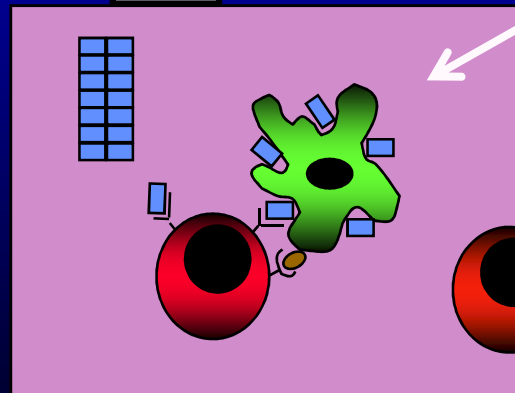
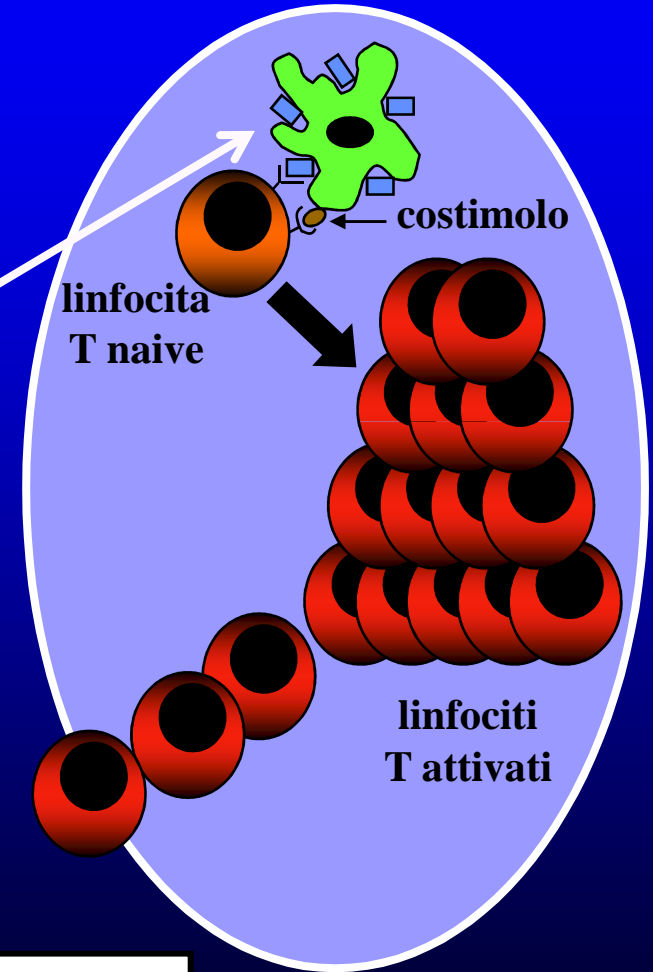


organo bersaglio

sito di induzione

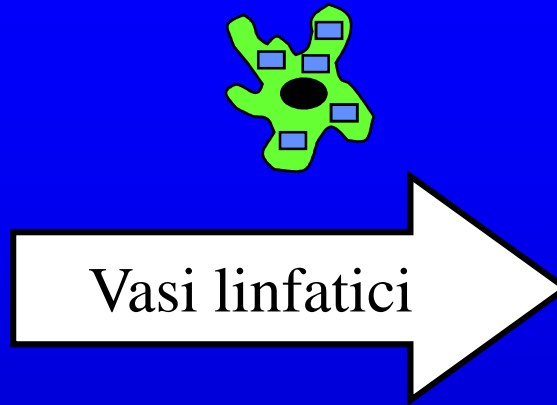


linfonodo loco-regionale

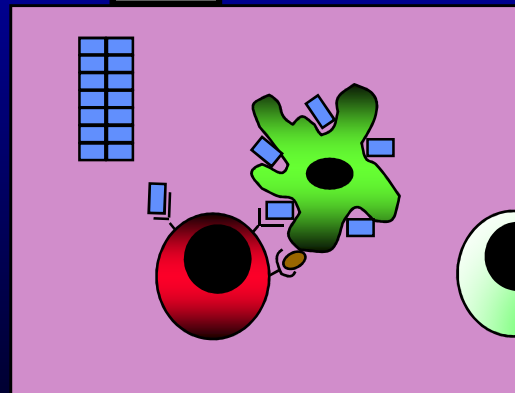
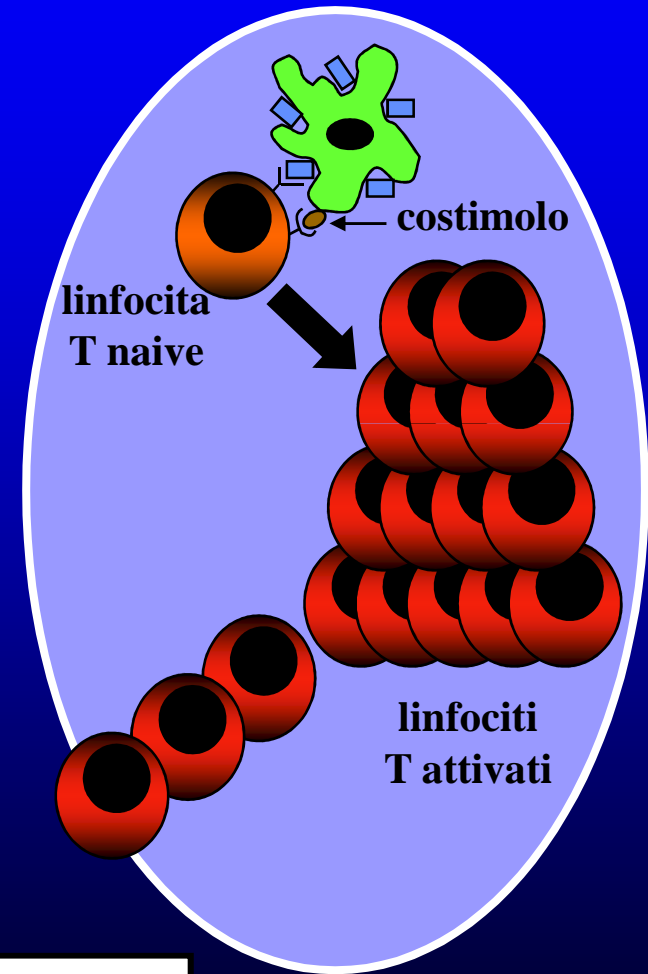


organo bersaglio

sito di induzione



linfonodo
loco-regionale

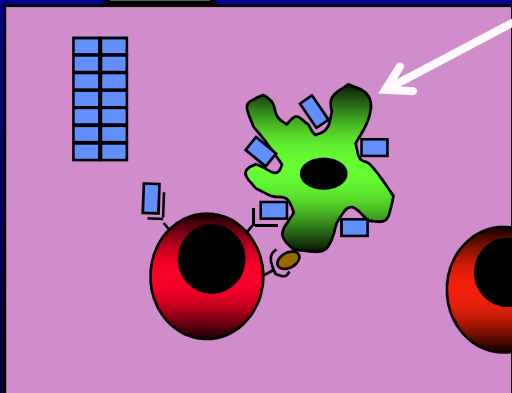
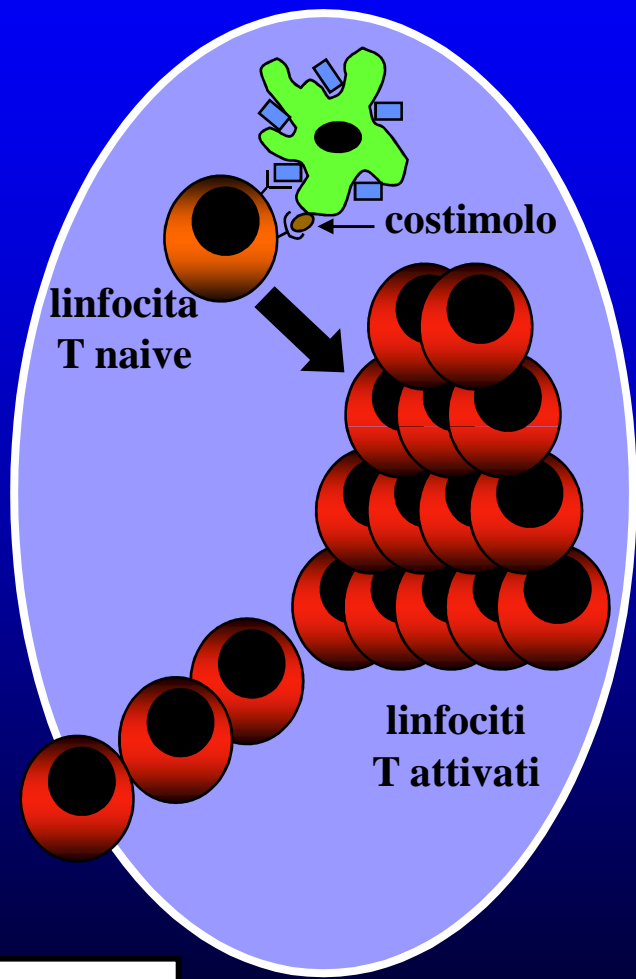


organo bersaglio

sito di induzione



linfonodo loco-regionale



organo bersaglio

sito di induzione



linfonodo
loco-regionale

