



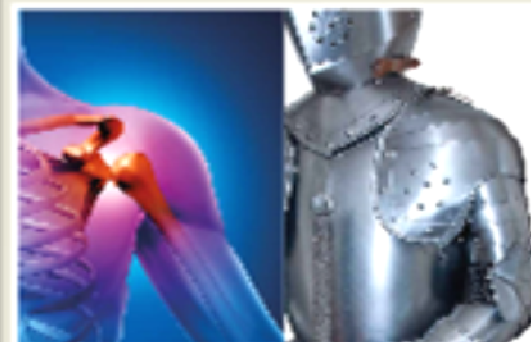
# LA SPALLA: SEMEIOTICA ECOGRAFICA

**SIMONA POZZA**



CENTRO ANALISI MONZA

**corso ECM**



*Radiodiagnostica per l'oggi e il domani...*

## **LA SPALLA, ARTICOLAZIONE E PARTI SUPERFICIALI: ANATOMIA E RAZIONALE DIAGNOSTICO**

*Ecografia, Tomografia computerizzata,  
Risonanza magnetica ed Elastosonografia*

**sabato 11 ottobre 2014**  
ore 08:00 - 18:30

**Auditorium CAM Centro Analisi Monza**  
viale Elvezia - Monza



# ECOGRAFIA SPALLA

- STRUTTURE TENDINEE (CUFFIA ROTATORI E CLB)
- PARTE DELLE STRUTTURE LEGAMENTOSE
- STRUTTURE MUSCOLARI
- PROFILO OSTEO-CARTILAGINEO



IN MODO DINAMICO E COMPARATIVO



**LINEE GUIDA:**  
*affermazioni organizzate  
in maniera sistematica  
allo scopo di aiutare le  
decisioni del medico e del  
paziente per un'adeguata  
assistenza medica in  
occasione di situazioni  
cliniche specifiche...  
(Field & Lohr 1992, 15).*



European Society of  
MusculoSkeletal Radiology

## Musculoskeletal Ultrasound Technical Guidelines

### I. Shoulder

Ian Beggs, UK  
Stefano Bianchi, Switzerland  
Angel Bueno, Spain  
Michel Cohen, France  
Michel Court-Payen, Denmark  
Andrew Grainger, UK  
Franz Kainberger, Austria  
Andrea Klauser, Austria  
Carlo Martinoli, Italy  
Eugene McNally, UK  
Philip J. O'Connor, UK  
Philippe Peetrons, Belgium  
Monique Reijnierse, The Netherlands  
Philipp Remplik, Germany  
Enzo Silvestri, Italy





## SONDE LINEARI AD ALTA FREQUENZA 7.5 – 13 mHz

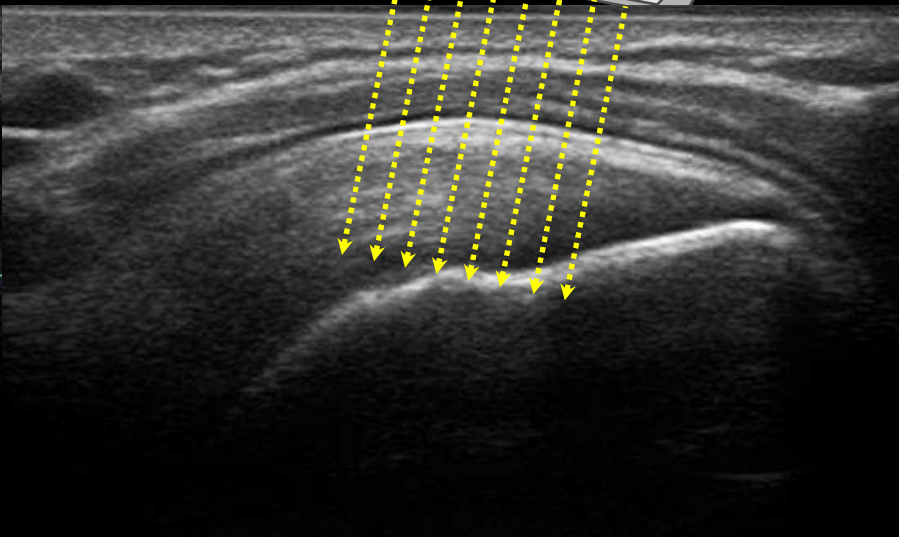
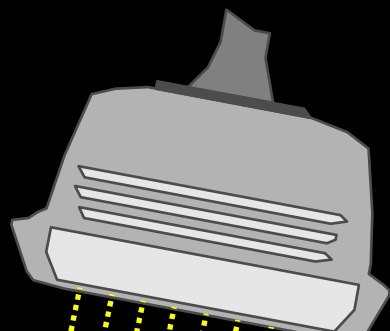
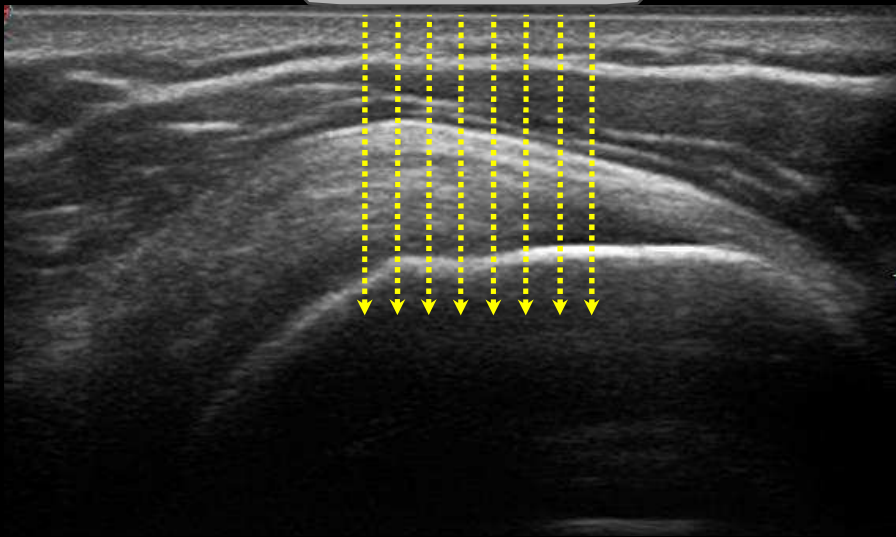
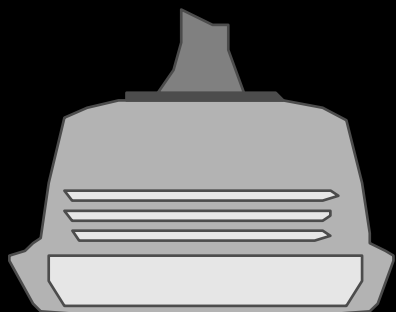


**POSIZIONE DEL PAZIENTE:  
SEDUTO DI FRONTE ALL'OPERATORE**



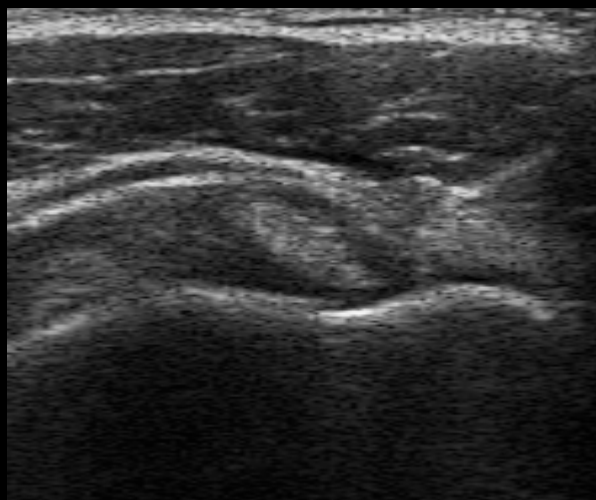
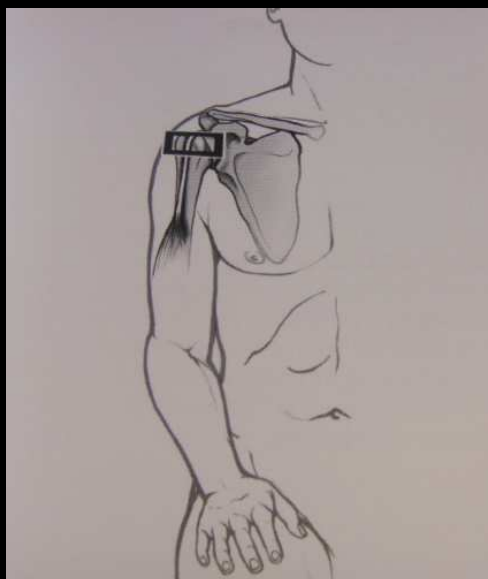


CITTA' della SALUTE e SCIENZA - PRESIDIO C.T.O. -





# CLB



**esaote MyLab** C.T.O. ECOGRAFIA

CLB, 02 OTT 2011 22:33

B	RIS-A	G	---
P	44mm	XV	C1
PRC	9/1/1	PRS	5
PST	0	C	2

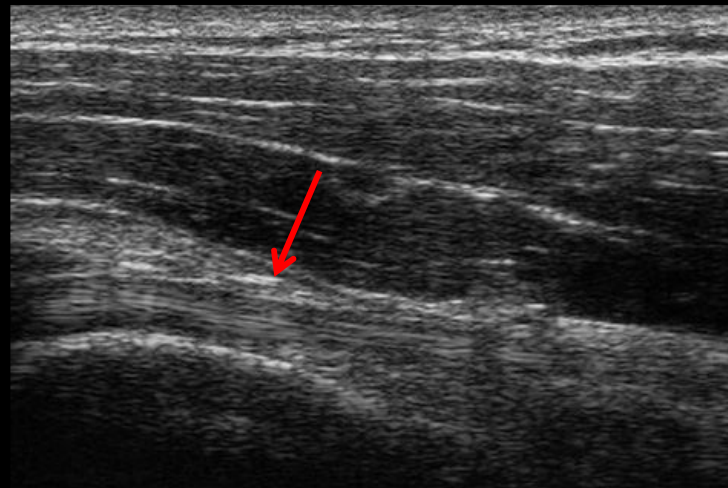
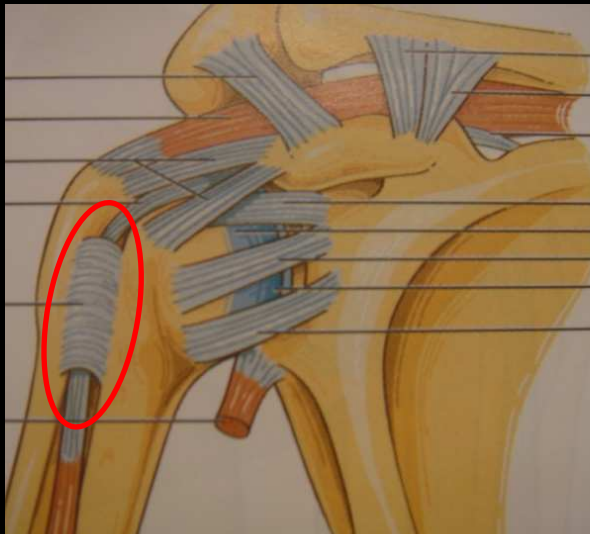
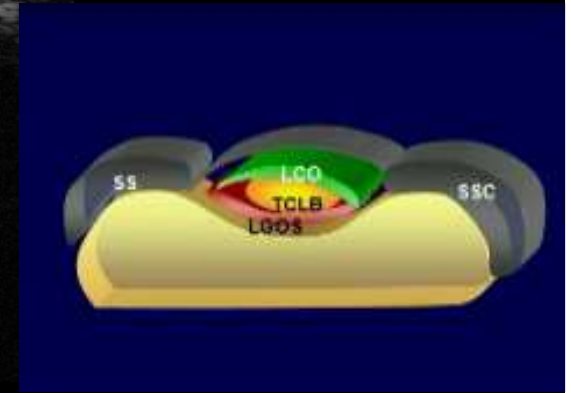
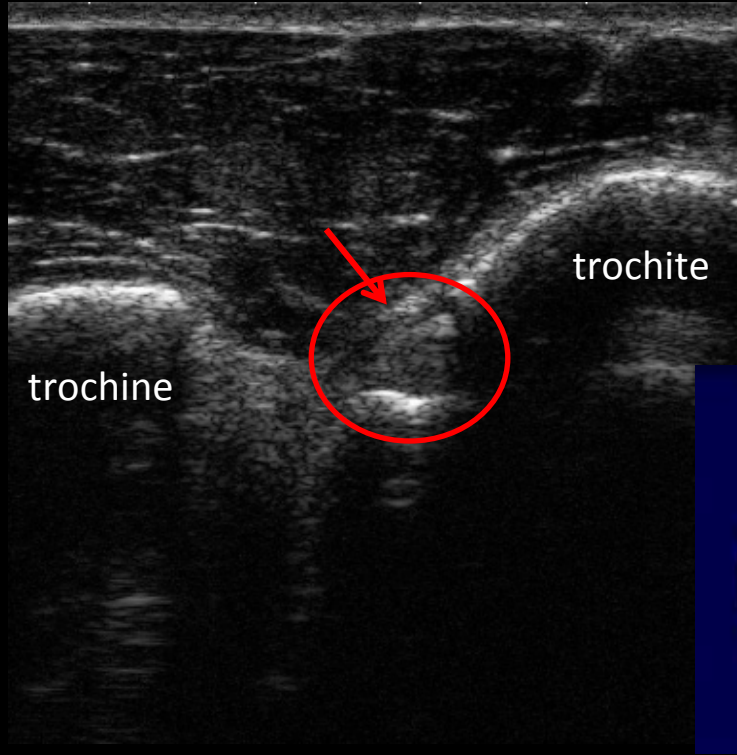
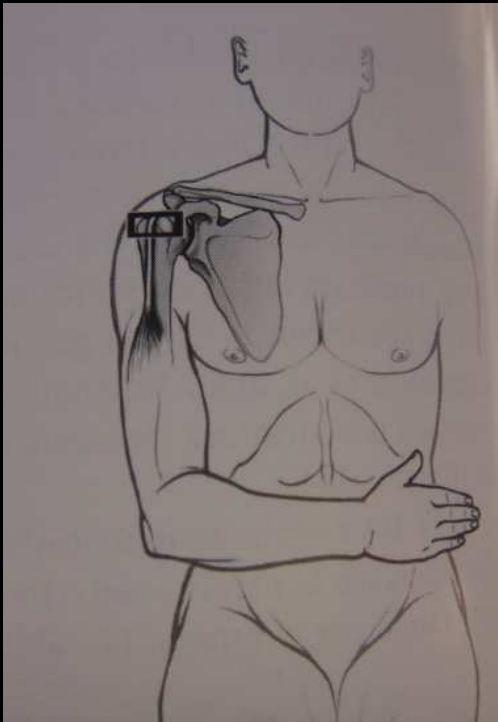
4 13  
GENERALE LAS23



*Turrin A, Cappello A. Sonographic anatomy of the supraspinatus tendon and adjacent structures. Skeletal Radiol 1997; 26: 89-93.*

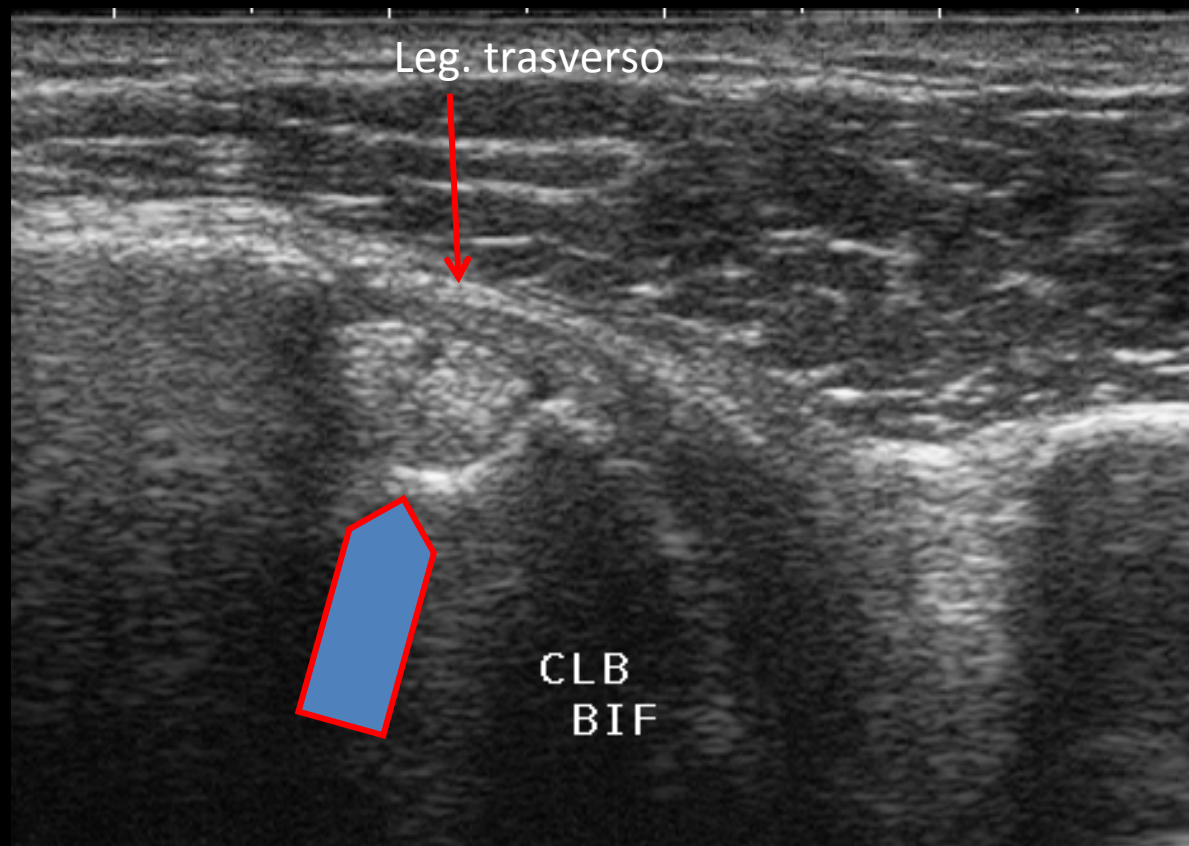


# CLB e LEGAMENTO TRASVERSO





# CLB: VARIANTE ANATOMICA



CLB BIFIDO Enad, 2004



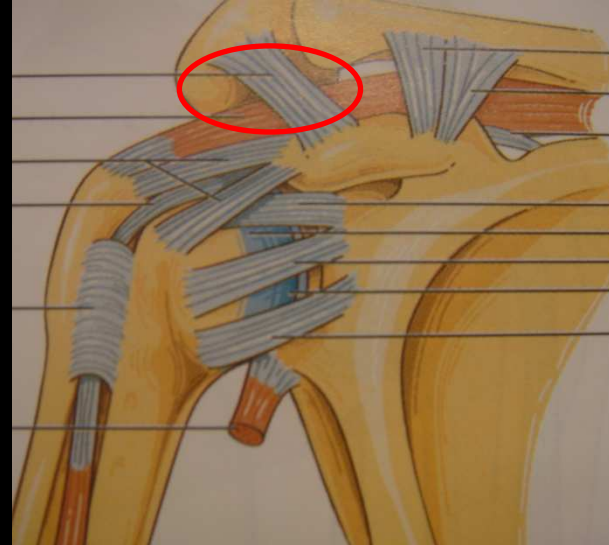
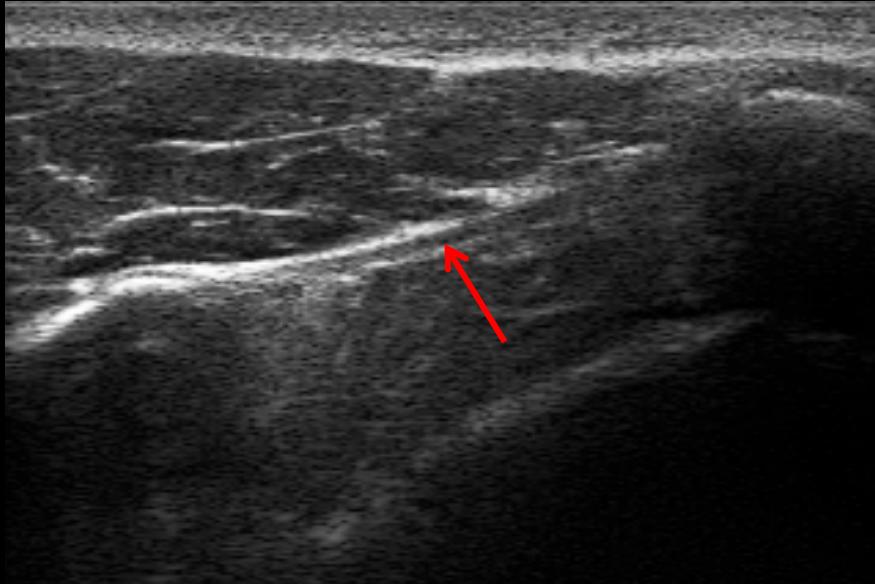


# LEGAMENTO CORACO-ACROMIALE



LA SPALLA, ARTICOLAZIONE E PARTI SUPERFICIALI: ANATOMIA E DIAGNOSI DAL GINECOLOGO  
Il ginecologo, l'ortopedico, il fisioterapista, il medico sportivo  
settembre 1998 - numero 214  
L'ESPRESSO

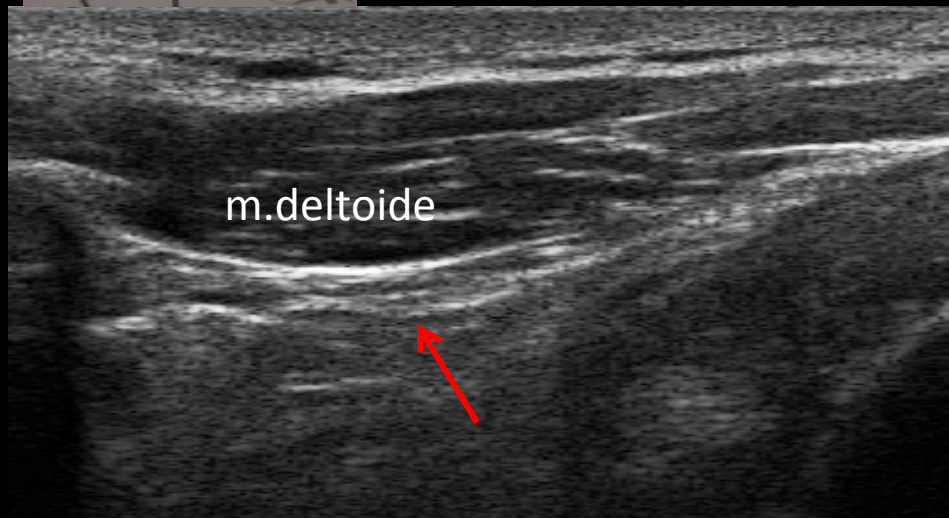
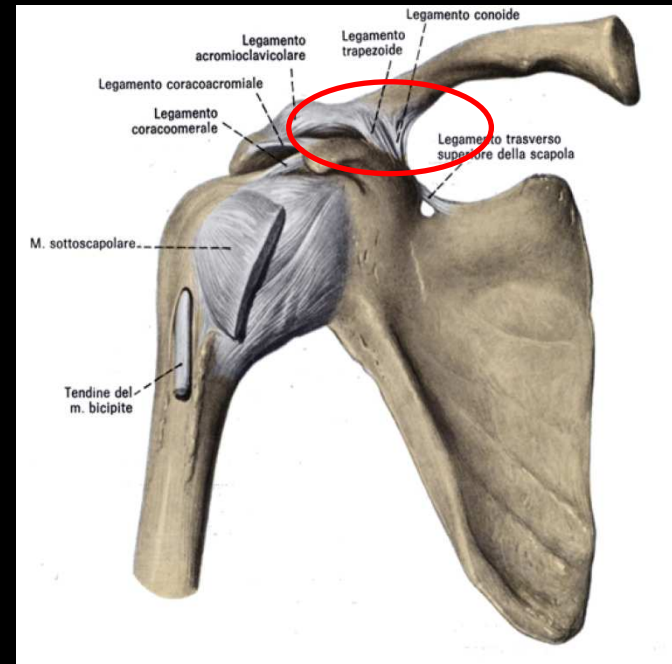
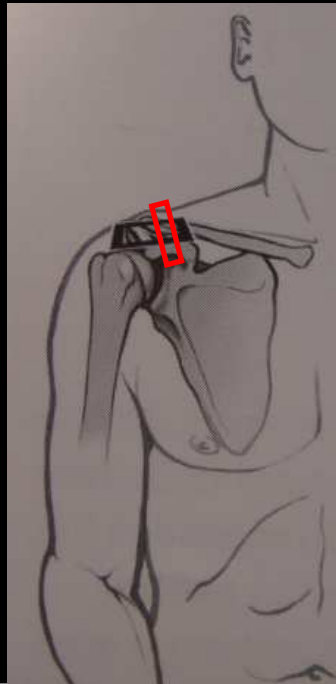
CITTA' della SALUTE e SCIENZA - PRESIDIO C.T.O. -





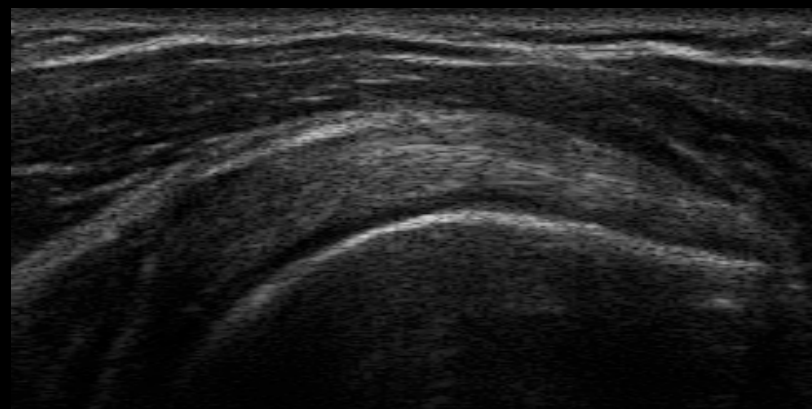
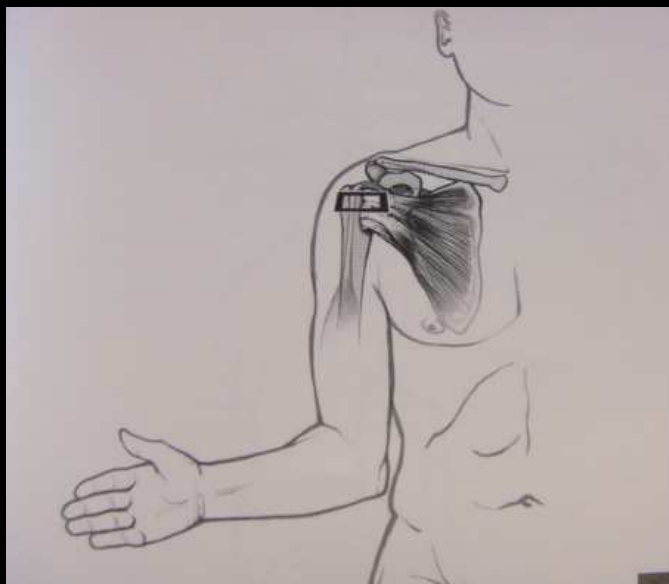
# LEGAMENTO CORACO-CLAVEARE

CITTA' della SALUTE e SCIENZA - PRESIDIO C.T.O. -

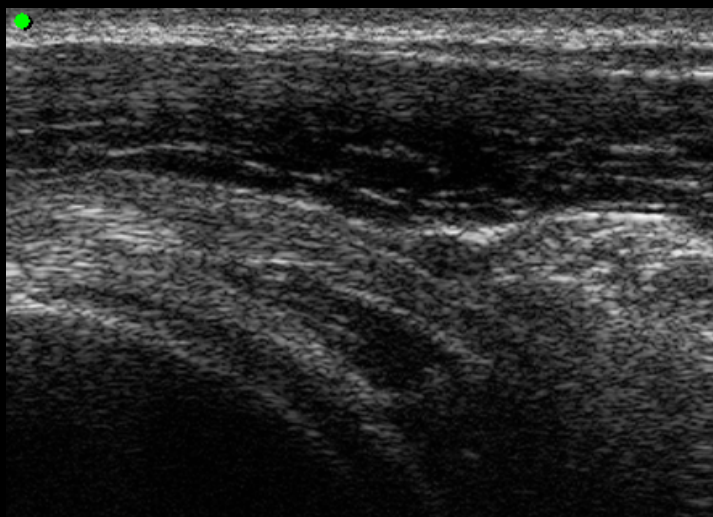




# T. del SOTTOSCAPOLARE



Scansione longitudinale:  
Inserzione distale sul trochine



Scansione assiale



van Holsbeeck M, Strouse PJ: Sonography of the shoulder: evaluation of subacromial-subdeltoid bursa. AJR, 1993, 160, 561-564.



# T. del SOTTOSCAPOLARE

CITTA' della SALUTE e SCIENZA - PRESIDIO C.T.O. -

**esaote MyLab** C.T.O. ECOGRAFIA

SOTTOSCAPOLARE, 02 OTT 2011 22:36

B	RIS-A	G	---
P	44mm	XV	C1
PRC	9/1/1	PRS	5
PST	0	C	2

4 13  
GENERALE LA523

0  
1  
2  
3  
4



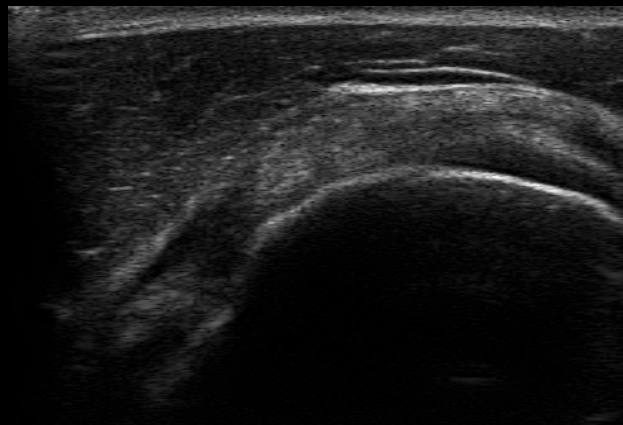


# CERCINE GLENOIDEO ANTERIORE

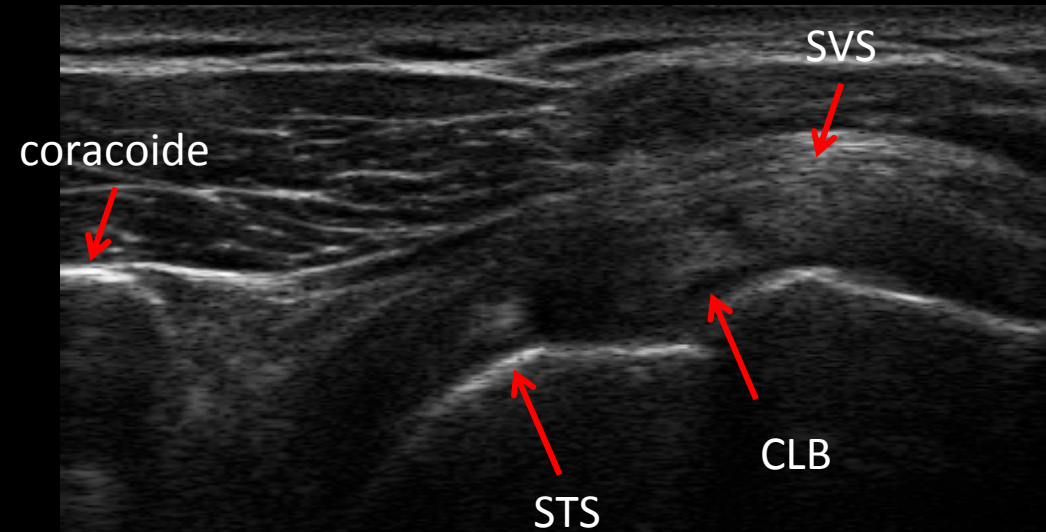




# PORZIONE ANTERIORE FIBRE SOVRASPINATO E INTERVALLO DEI ROTATORI



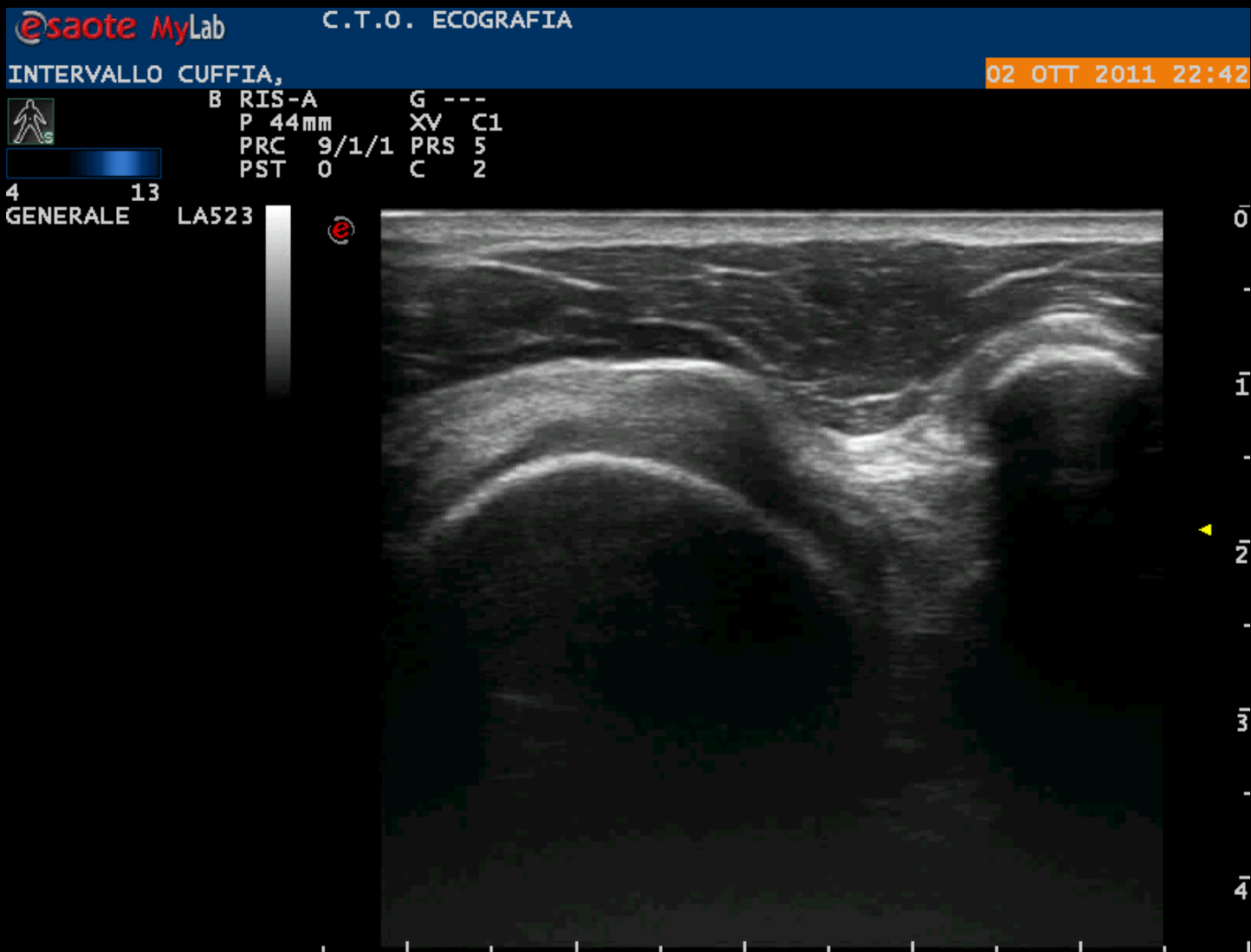
Fibre anteriori sovraspinato





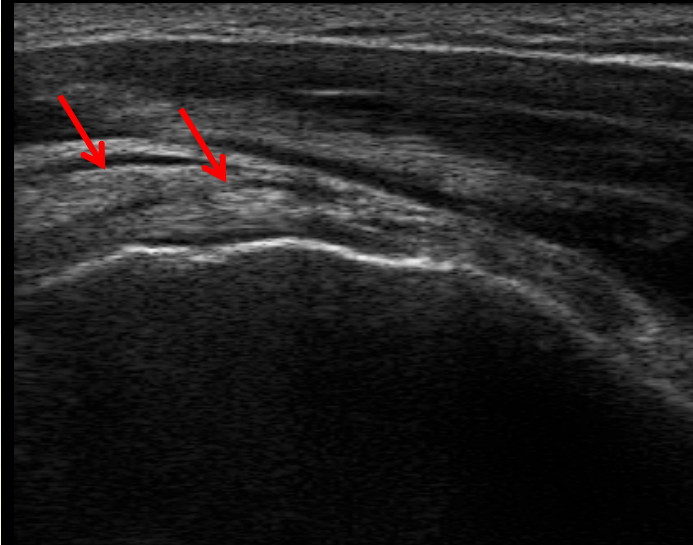
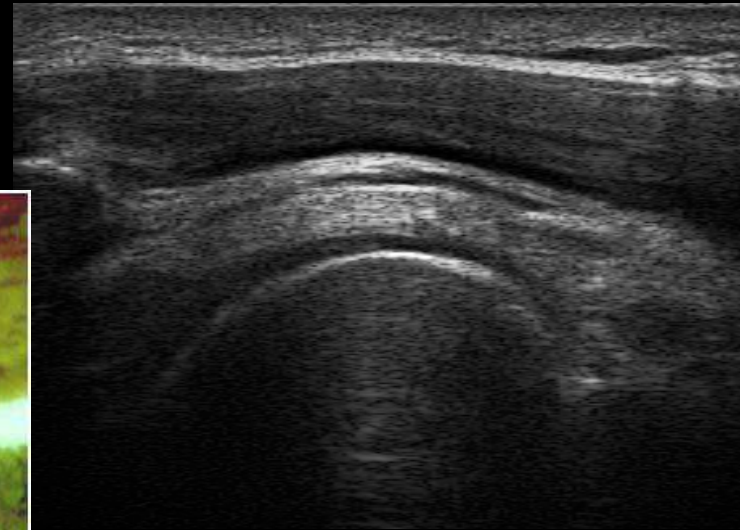
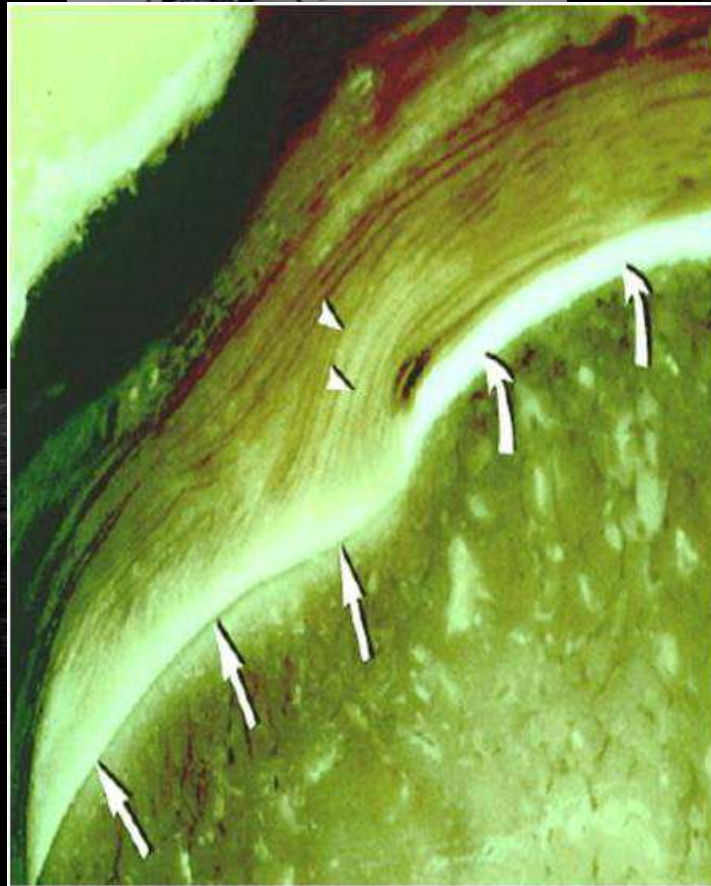
CITTA' della SALUTE e SCIENZA - PRESIDIO C.T.O. -

# INTERVALLO DEI ROTATORI





# T. del SOVRASPINATO



Crass JR, Craig EV, Feinberg SB. The hyperextended internal rotation view in rotator cuff ultrasound. J Clin Ultrasound 1987; 15: 416-420.





# T. del SOVRASPINATO



**esaote MyLab** C.T.O. ECOGRAFIA

SOVRASPINATO, 02 OTT 2011 22:46

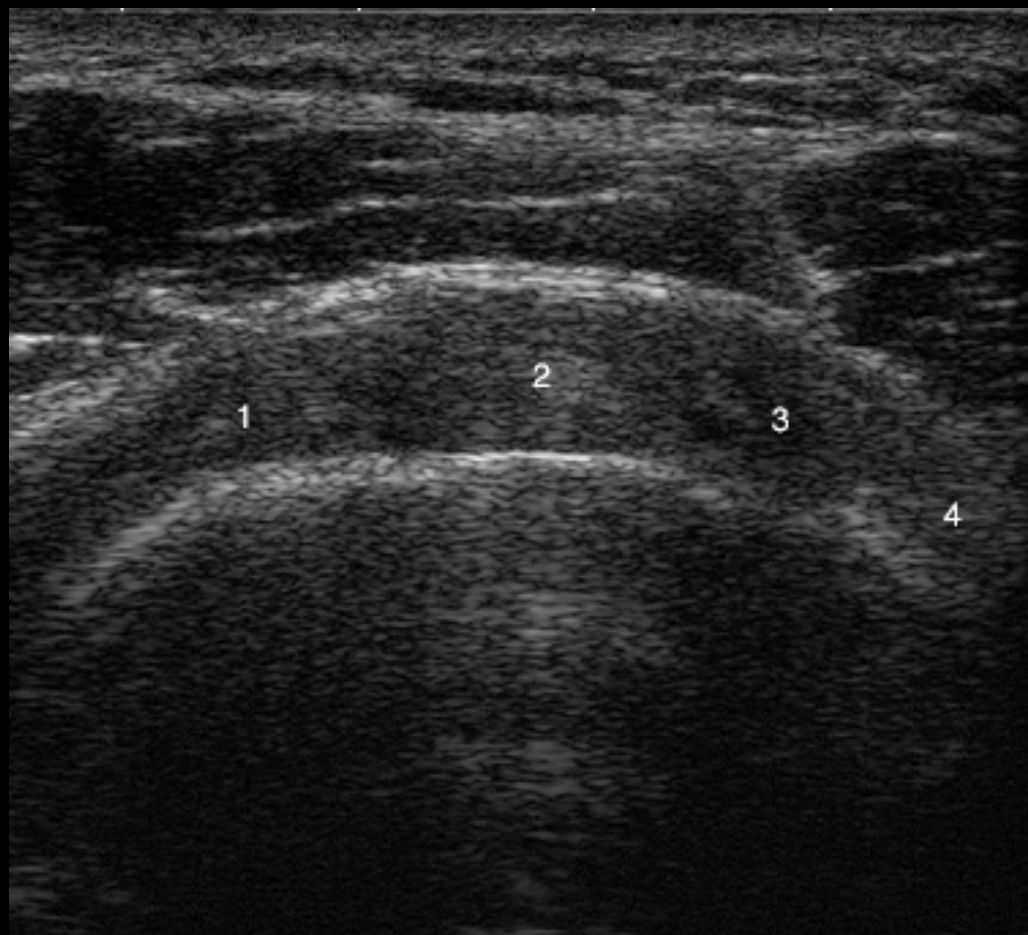
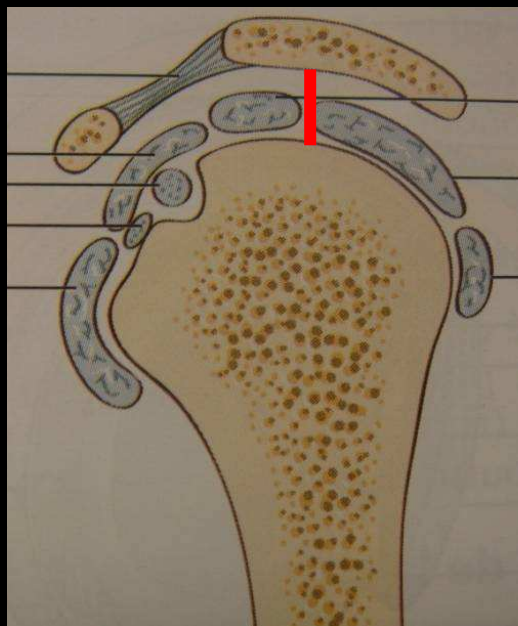
B	RIS-A	G	---
P	44mm	XV	C1
PRC	9/1/1	PRS	5
PST	0	C	2

4 13  
GENERALE LA523

0  
1  
2  
3  
4



# SPESSORE CUFFIA





# SPESSORE CUFFIA

**esaote MyLab** C.T.O. ECOGRAFIA  
SPES CUFFIA, 02 OTT 2011 23:21

B	RIS-A	G	---
P	44mm	XV	C1
PRC	9/1/1	PRS	5
PST	0	C	2

4 13  
GENERALE

LA523

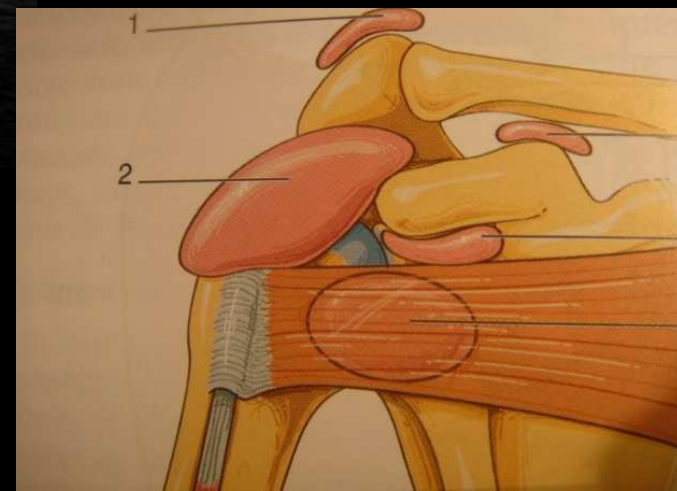
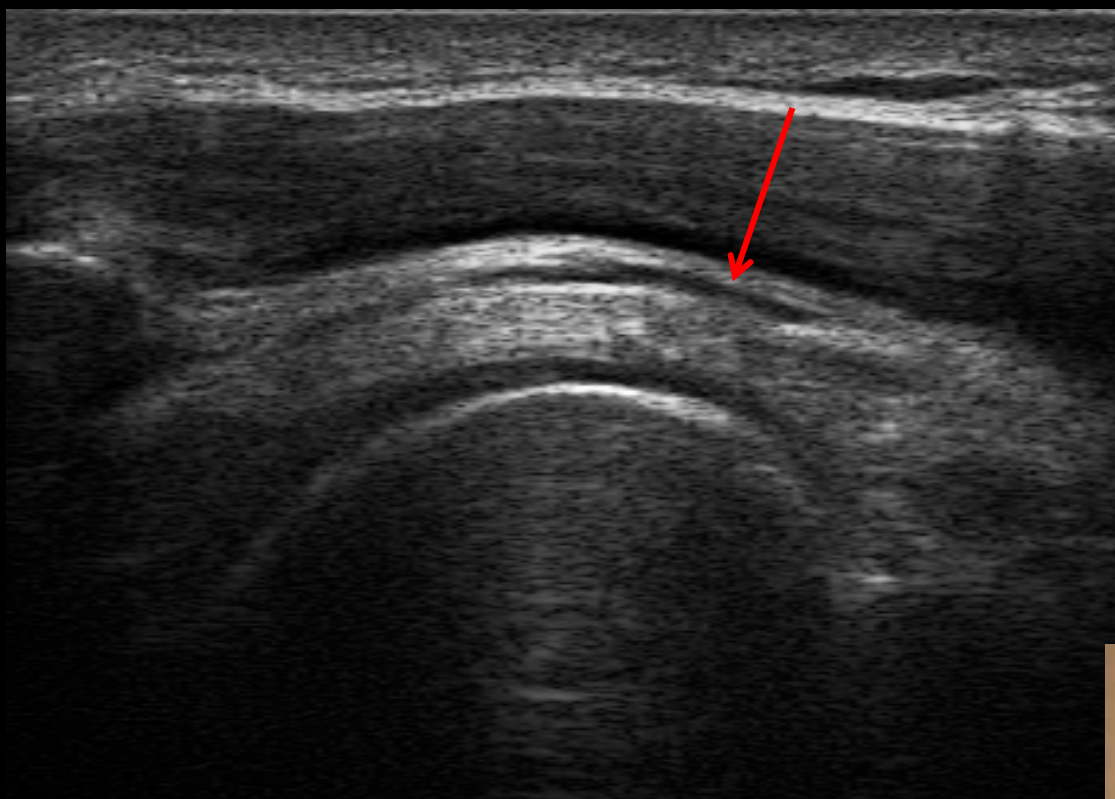


0  
1  
2  
3  
4



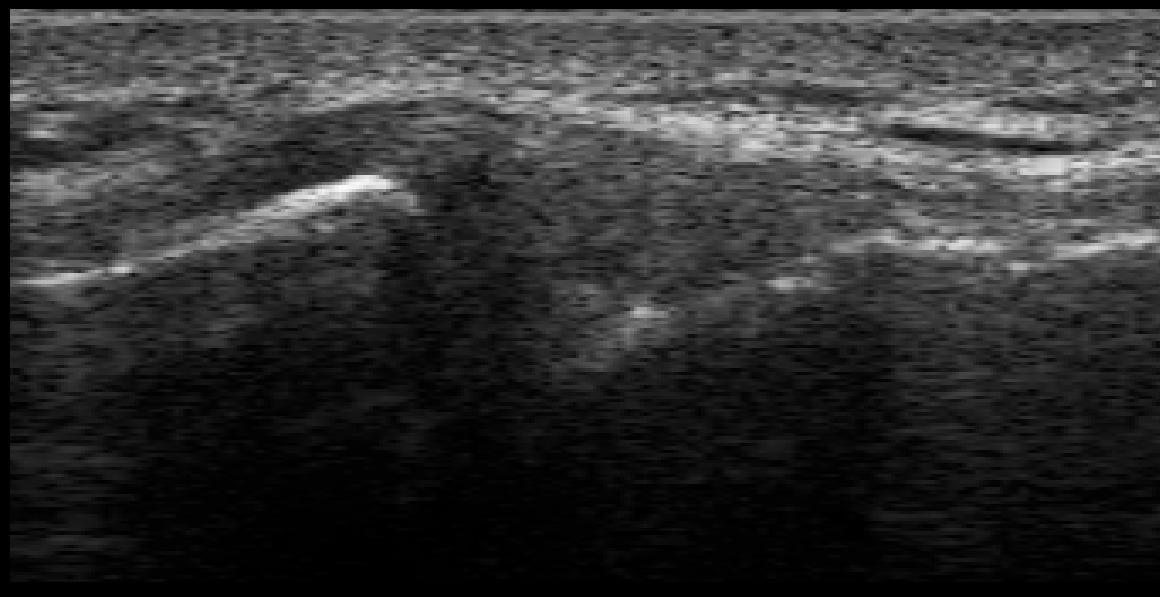
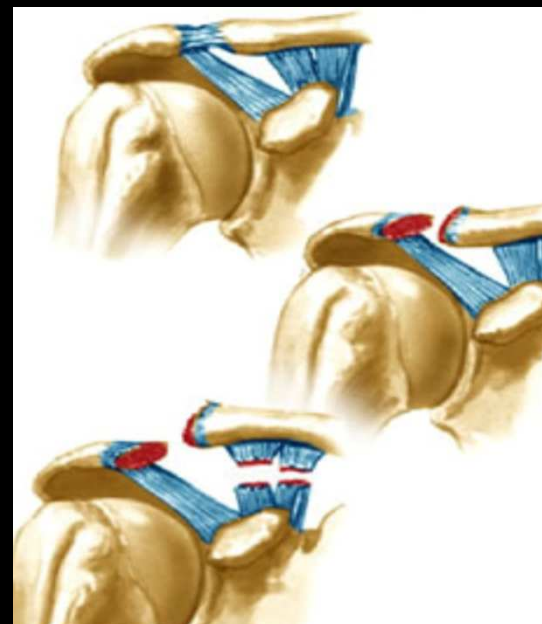
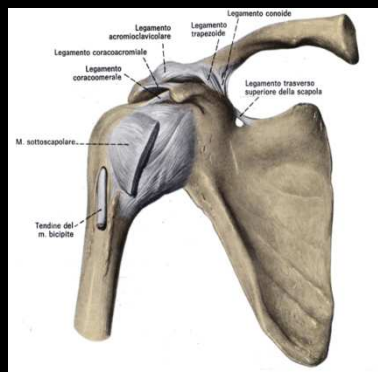


# PORZIONE SUPERIORE BORSA SAD e T. del SOVRASPINATO



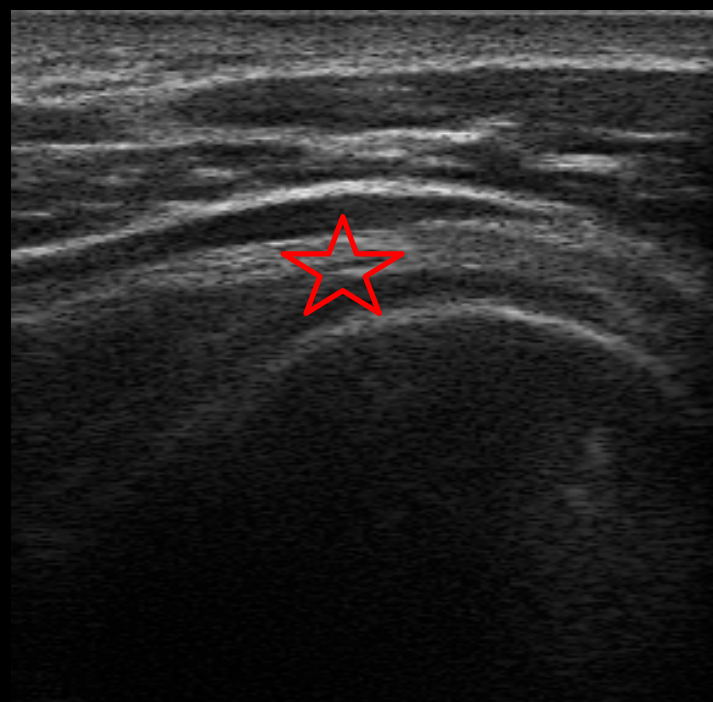
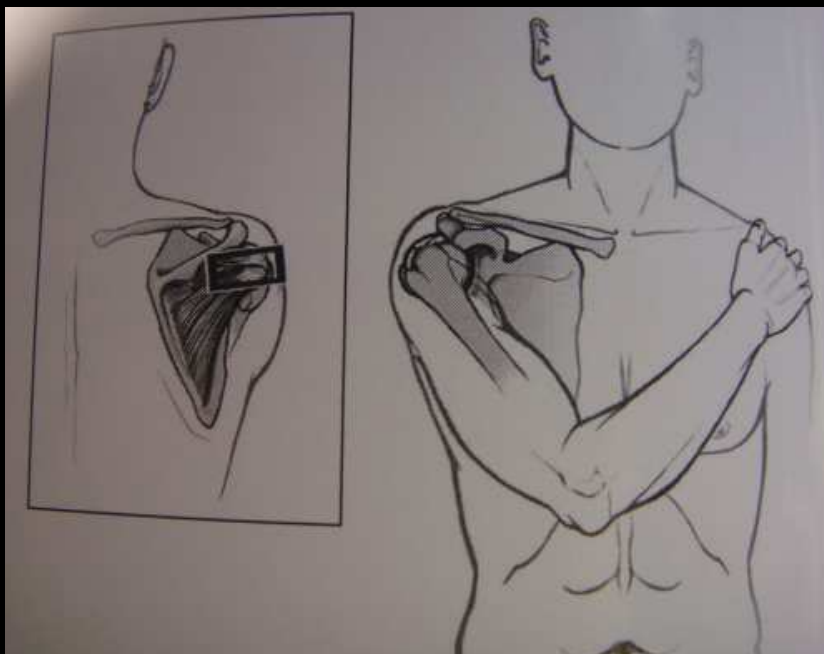


# LEGAMENTO E ARTICOLAZIONE ACROMION-CLAVEARE



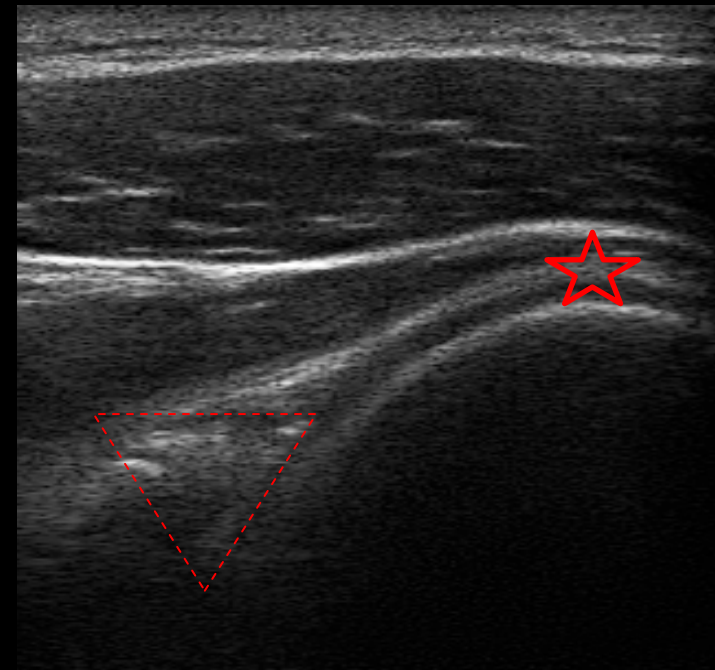
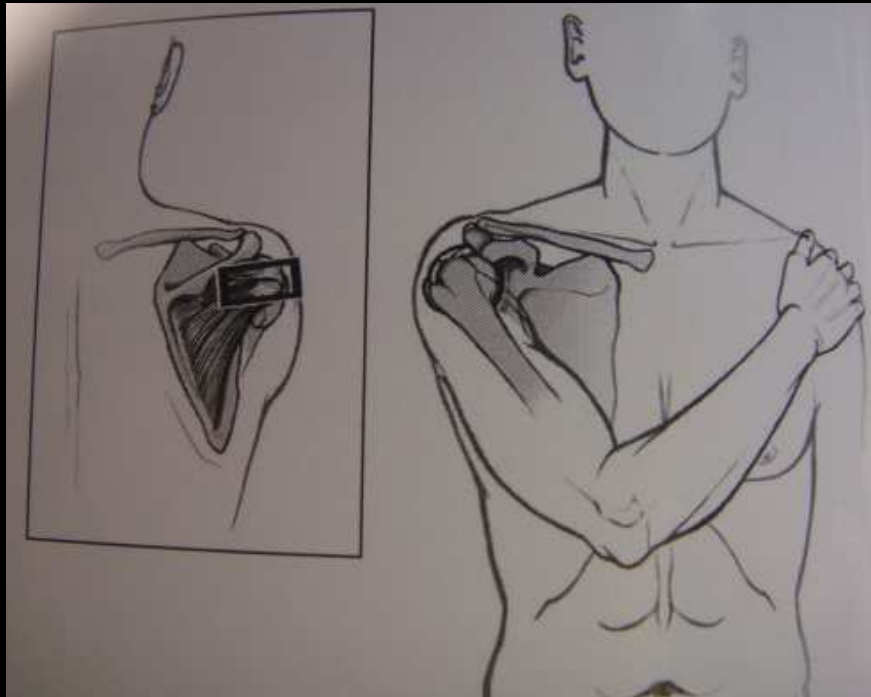


# TENDINE SOTTOSPINATO





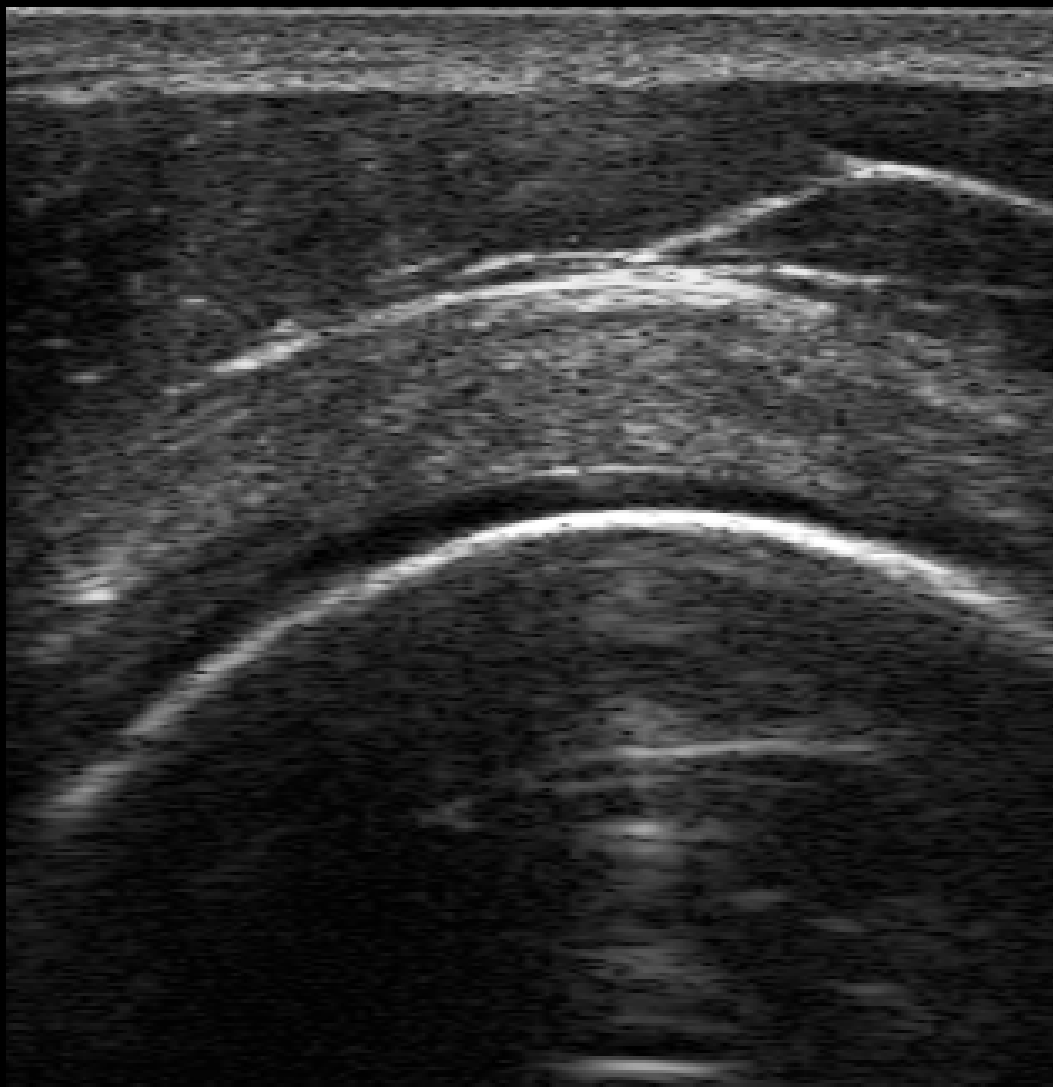
# T. del PICCOLO ROTONDO e CERCINE FIBROCARILAGINEO POSTERIORE



Brasseur JL, Montagnon D, Jacquard B, Tardieu M: Ecografie ostéo-articulaire de l'épaule. Radiol 2000. 81, 330-342.



# CARTILAGINE ARTICOLARE E PROFILO OSSEO OMERALE

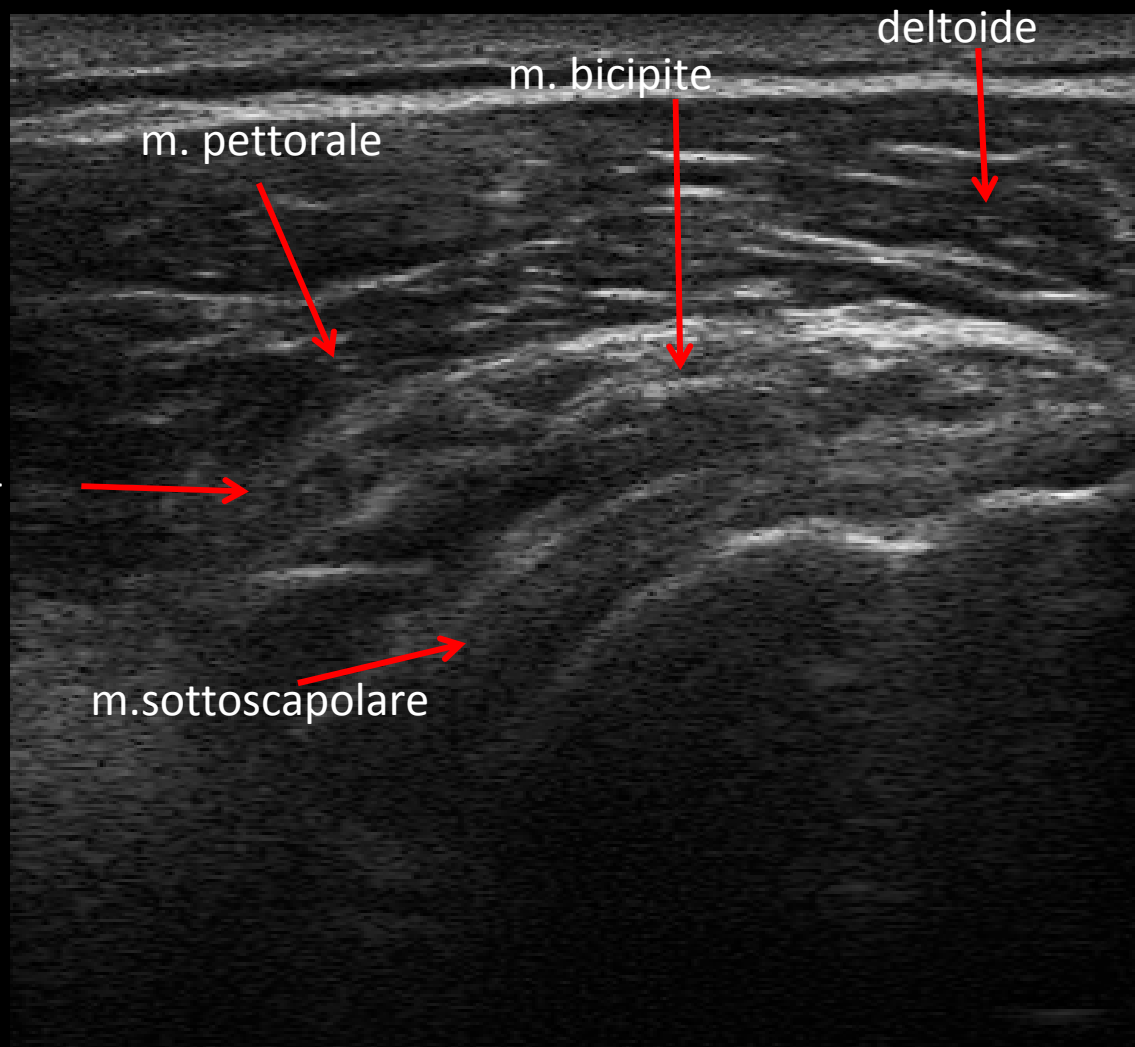






# STRUTTURE MUSCOLARI

CITTA' della SALUTE e SCIENZA - PRESIDIO C.T.O. -



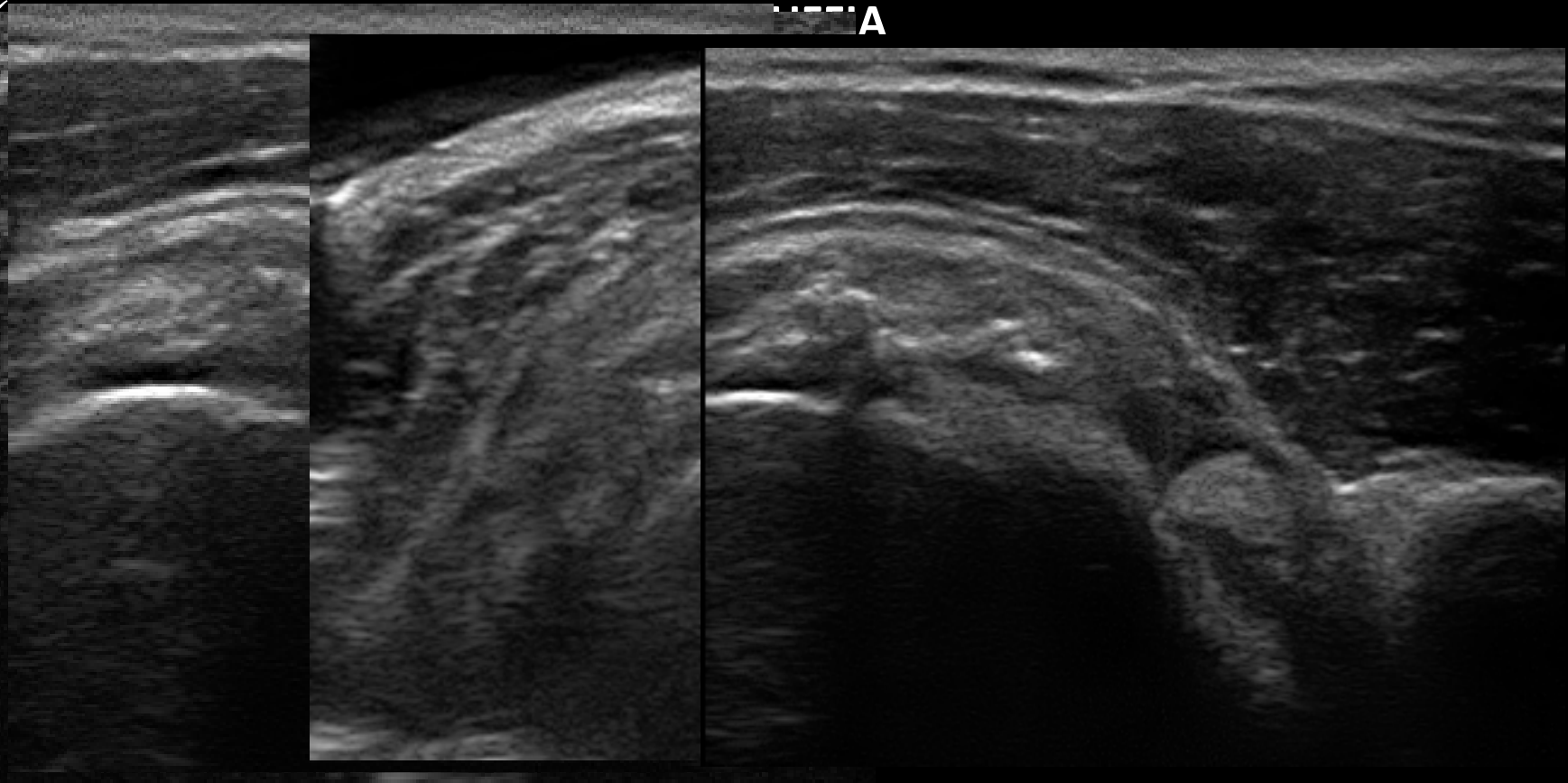


# PATOLOGIA DELLA CUFFIA DEI ROTATORI

EZIOLOGIA: TRAUMATICA - DEGENERATIVA - FLOGISTICA

SEGNI DIRETTI:

- ✓ AREE FOCALI IPOECOGENE (INFRATENDINEE O DI UN VERSANTE TENDINEO)
- ✓ TENDINE ASSOTTIGLIATO, ISPESSITO, NON VISUALIZZABILE
- ✓ CALCIFICAZIONI INFRATENDINEE O BURSALI
- ✓ RIDUZIONE DI SPESSORE DELLA CUFFIA

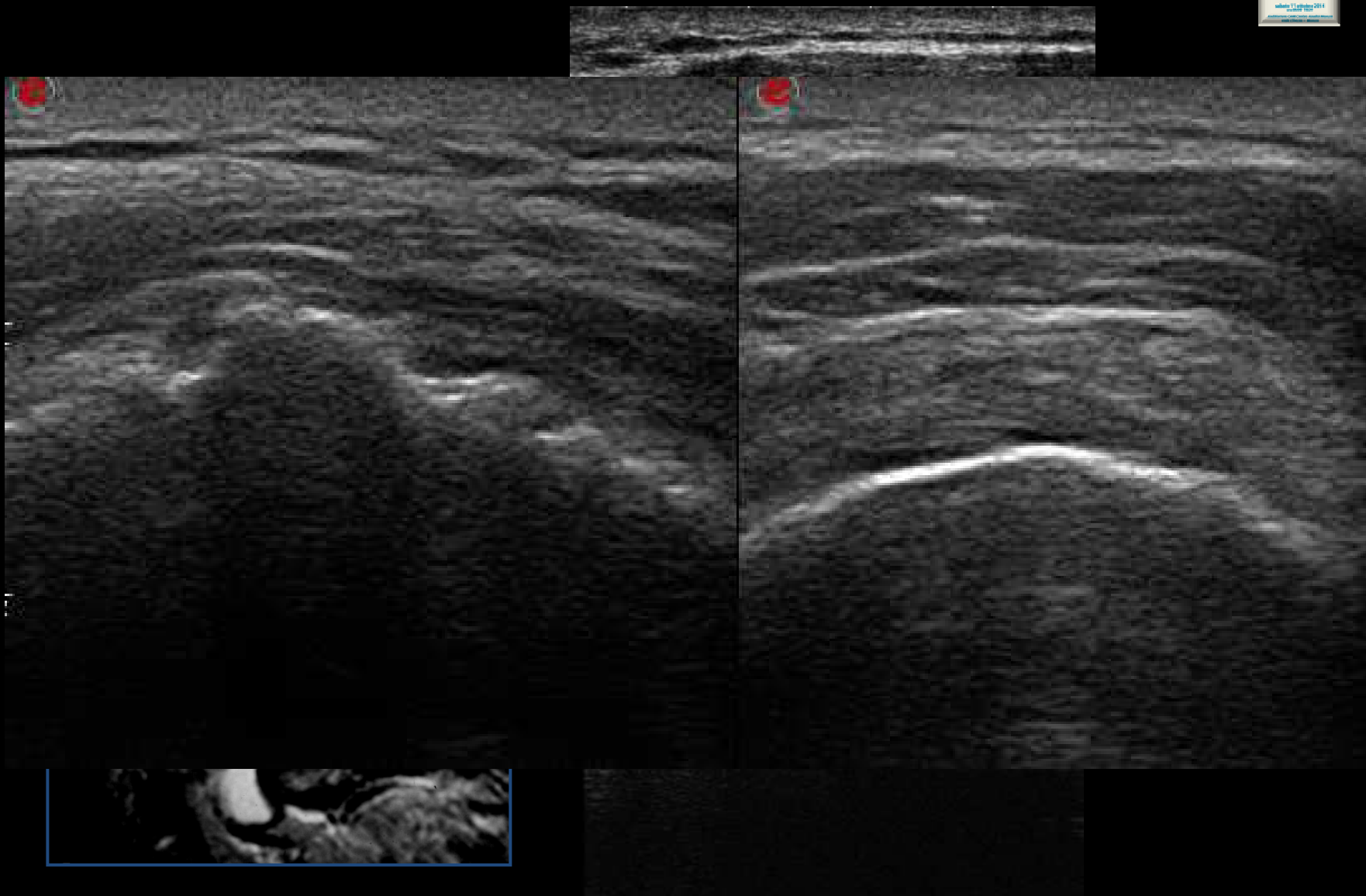




# ROTTURA COMPLETA DELLA CUFFIA



CITTA' della SALUTE e SCIENZA - PRESIDIO C.T.O. -

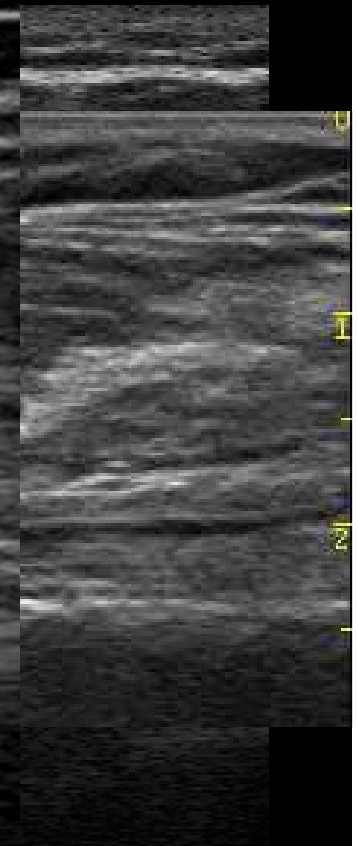
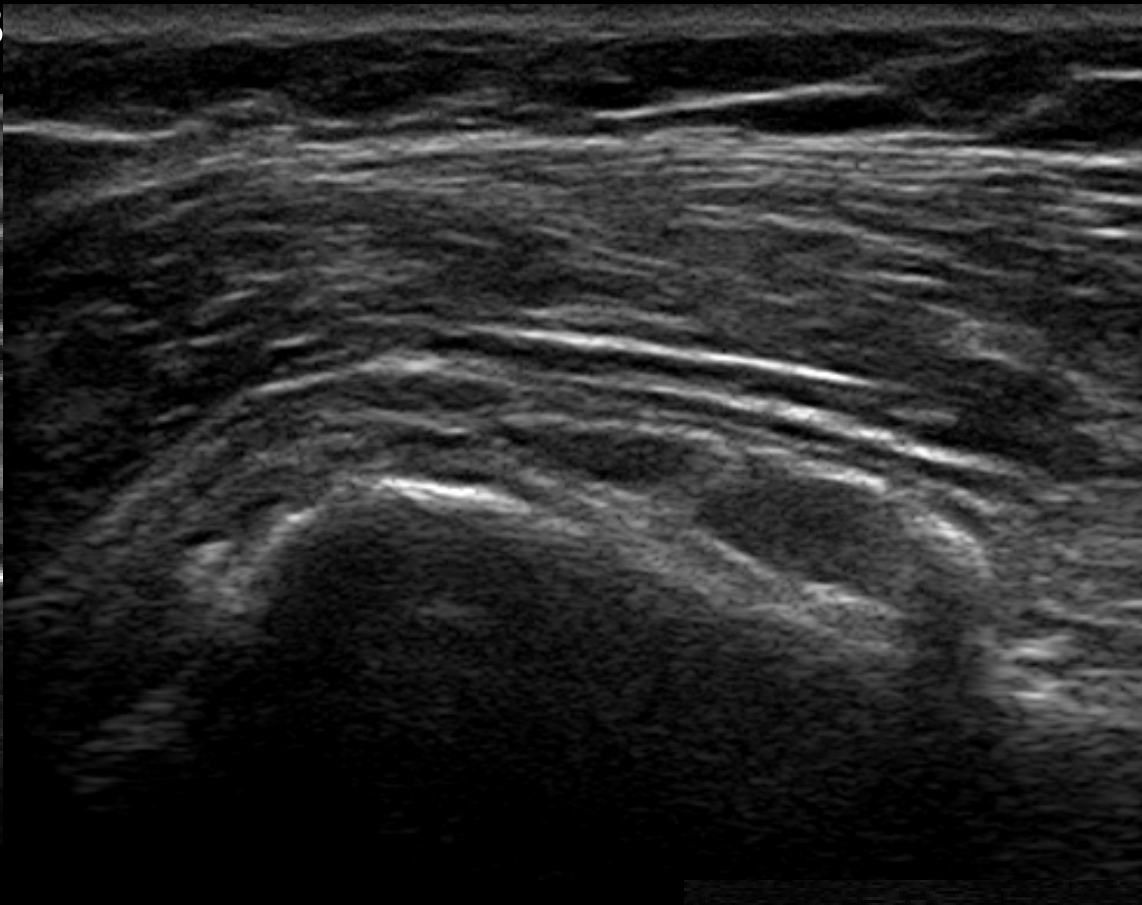
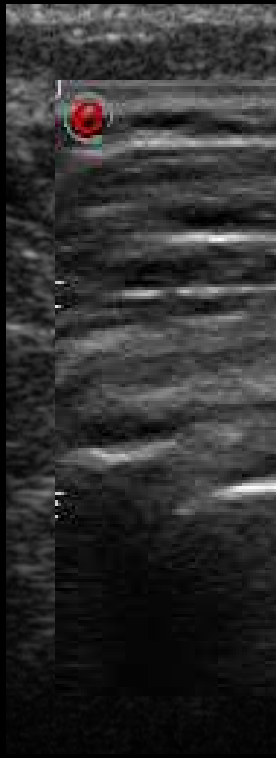




# PATOLOGIA DELLA CUFFIA DEI ROTATORI

## SEGNI INDIRETTI:

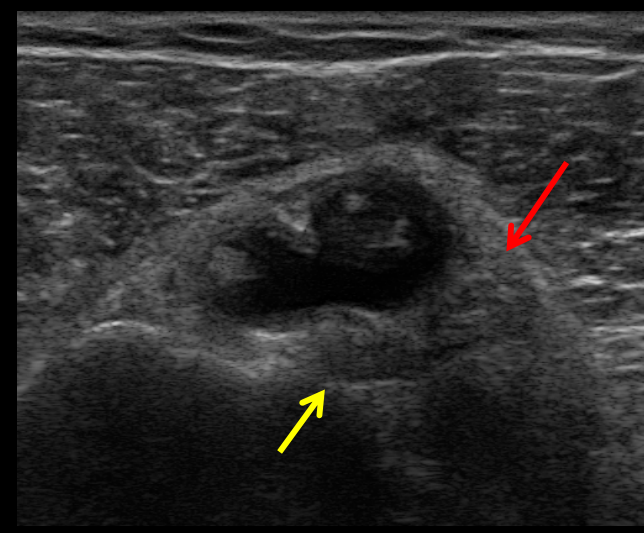
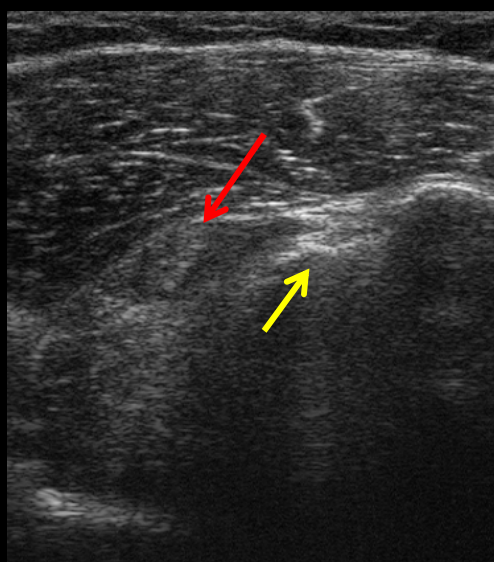
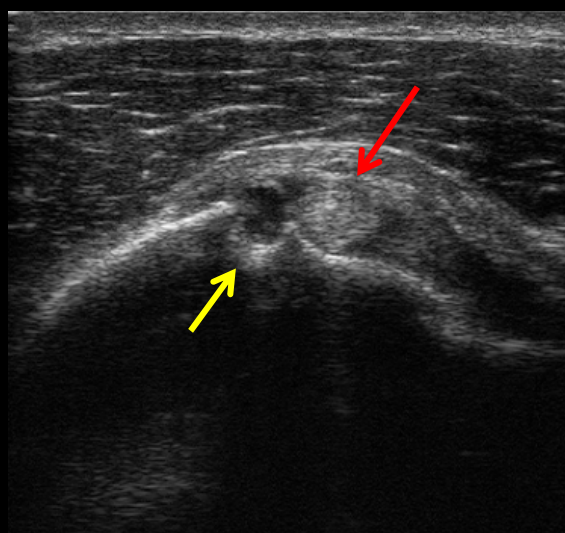
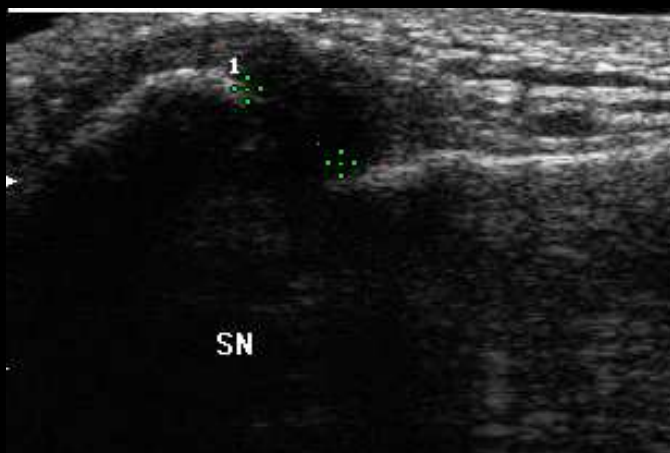
- ✓ LIQUIDO IN SEDE ARTICOLARE -> 60%
- ✓ LIQUIDO SAD + ARTICOLARE -> 95%
- ✓ LIQUIDO S





# PATOLOGIA DA INSTABILITA'

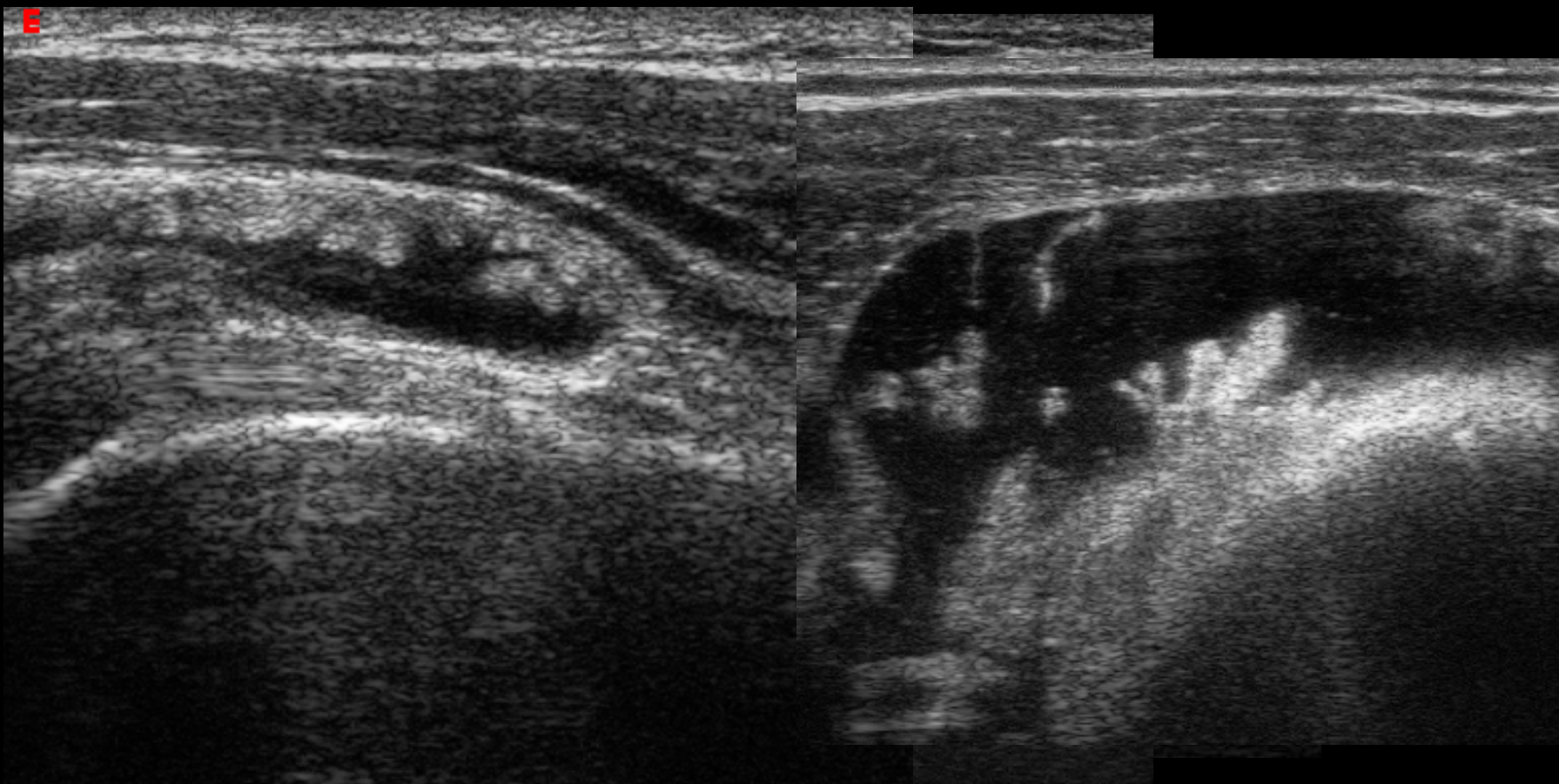
- ✓ DIASTASI ACROMION-CLAVEARE
- ✓ SUBLUSSAZIONE MEDIALE DEL CLB





# PATOLOGIE CORRELATE

- ✓ TENOSINOVITE CLB
- ✓ TENDINOSI CLB
- ✓ LESIONE COMPLETA CLB
- ✓ ARTROPATIE SINOVIALI A EZIOLOGIA VARIA (INFIAMMATORIE/DEGENERATIVE)





CITTA' della SALUTE e SCIENZA - PRESIDIO C.T.O. -



LA SPINA, ARTICOLAZIONE  
PARTICIPAZIONE  
ANATOMIA E DIZIONARIO  
DIA-GNOSTICO  
Il grande, tempestivo consulto  
di un medico specialista  
venerdì 11 febbraio 2011  
ore 17.00

**GRAZIE  
PER  
L'ATTENZIONE**